

How to succeed in getting...

Permits for Green Energy Projects in Hawaii



Paul Luersen, AICP - Senior Environmental Planner, CH2M HILL
Jeffrey Overton, AICP - Principal Planner, Group 70 International, Inc.

Project Permitting Essentials

Technical

- Size/Scale
- Location
- Inputs/Outputs
- Regulatory
- Timetable

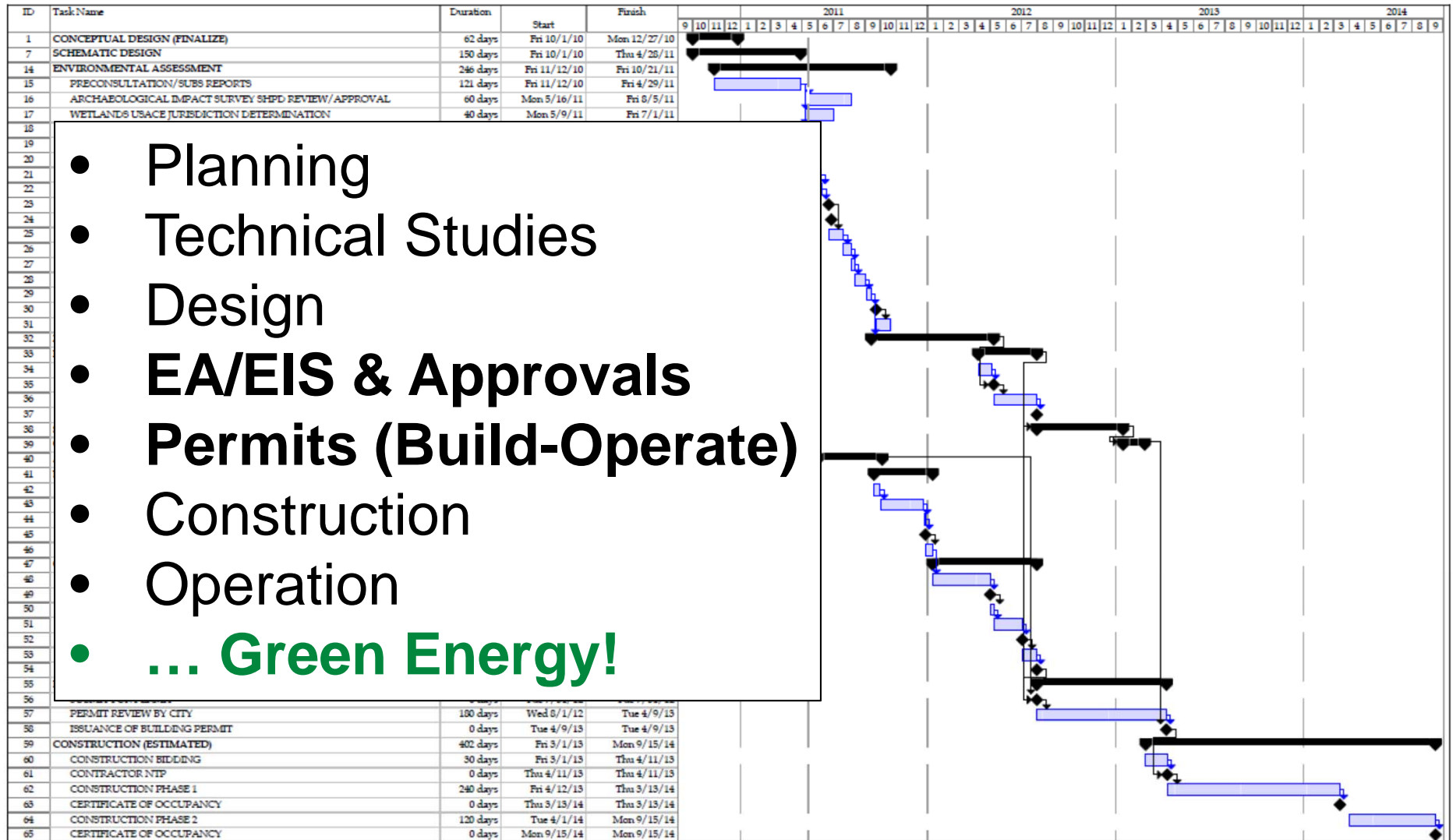
Community

- Culture
- Neighbors
- Area/Region
- Political
- Interest Groups

Environment

- Green/Brown
- Cultural
- Biological
- Human/Social
- Benefits

Permits & Reviews = Time



Limit the Process -- Up Front

- **Define Permit Requirements**
 - Land Use, Environmental, Site/Building
 - Legal Agreements, Licenses
- **Scope Project to Minimize Issues**
 - Location, Scope, Process, Design Choices
 - Limit Permits & Regulatory Process
- **Inter-Agency Cooperation Essential**
 - Federal, State, County
 - Seek Concurrent Reviews

“Don’t Be Afraid...It’s Green Energy!”



- **Agencies are Expediting Permit Reviews**
 - Mandates, System Efficiencies, Actions
- **Communities want Green Energy**
 - Everyone is Doing Their Part
- **It’s still a “Development Project”**
 - Not without Real Impacts & Balancing Values

Engage the Community

- Inform & Understand
 - Give Facts & Visuals
- Involve Community: Planning & Reviews
 - Outreach, Seek Local Input, Reflect Issues
- “Ownership” of the Outcomes
 - Recognize Impacts
 - Share in the Success



Kauai Algae Farm

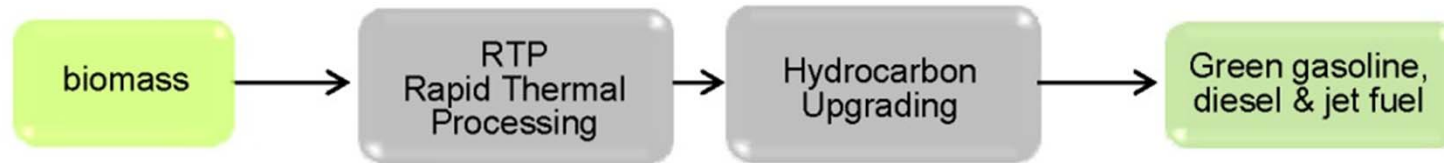
General Atomics & Hawaii BioEnergy

- Algae-Based Green Jet Fuel
- \$20m DARPA Grant Funding
- 30 acres
- Fed, State, County Permits: 12 mos.
- 2011 Operations



Biofuels Processing Facility

UOP Honeywell



- Non-Petroleum Fuels from Biomass
- DOE \$25m Grant
- NEPA, State & County Permits: 12 mos.
- 2012 Operational
- Agencies & Public



ASEF Kalaeloa Solar Farm

ASEF Kalaeloa (Sunetric & Partners)

- Ground Mount Solar Photovoltaic 5 MW
- HECO Negotiate PPA
- Kalaeloa HCDA
- HRS 343 EA
- State & County Permits: 18 mos.
- Construction: 2014
- Cultural Community



Kawailoa Wind Farm

Overview



- ✓ First Wind
- ✓ Commercial Wind Energy
- ✓ Kamehameha Schools
North Shore Lands
- ✓ HEPA and NEPA
- ✓ Federal, State, County
permits
- ✓ 2012 Operational

Kawailoa Wind Farm

- ✓ 69 MW
- ✓ 30 Turbines
- ✓ Collector lines
- ✓ Switching Station
- ✓ Access Roads
- ✓ Communications





Kawailoa Wind Farm

Permit Assessment

- ✓ Based on project description and alternatives
- ✓ GIS maps of regulatory, environmental, other data
- ✓ Include all potential permits
- ✓ Research requirements and consult with agencies
- ✓ Think strategically
- ✓ Use available tools (e.g., HRS 201N)

	A	B	D	E
1	Permit/Approval	Approving Agency	Condition or Trigger	Your Project
2				
3	FEDERAL			
9	STATE			
24	COUNTY			
37	MISCELLANEOUS			



Kawailoa Wind Farm

Initial Permits and Approvals

HRS 343 EIS (Accepting Authority – DBEDT) for entire project

NEPA EA for Federal Approvals

Wind Farm Permits:

- ✓ **ESA Section 10 Incidental Take Permit**
- ✓ **FAA Determination of No Hazard to Air Navigation**
- ✓ **Federal Communications Commission (FCC) License**
- ✓ **State Endangered Species Incidental Take License**
- ✓ **Operate or Transport Oversize and/or Overweight Vehicles and Loads**
- ✓ **SMA (Minor)**
- ✓ **Conditional Use Permit (Minor)**

Communication Site Permits:

- ✓ **Conservation District Use Permit**
- ✓ **Request for Use of State Lands**

Kawailoa Wind Farm

HEPA and NEPA



CH2MHILL®

✓ HRS 343 EIS – under 12 months

EISPN	Sep 2010
DEIS issued	Feb 2011
FEIS Acceptance	Jul 2011

✓ NEPA concurrent with HEPA EIS

✓ Commercial operation Nov 2012



Kawailoa Wind Farm

Permit Schedule

- ✓ Based on Permit Assessment and other key activities
- ✓ Analyze task durations and links to other tasks
- ✓ Optimize the work
- ✓ Work the schedule
- ✓ Have a contingency plan (change management)

ID	Task Name				
		2009	2010	2011	2012
1	Kawailoa Wind Farm Project, Oahu, Hawaii				
2	Technical Activities				
3	Planning Studies				
7	Wind Farm - Conceptual Design				
14	Consultations and Stakeholder Engagement				
16	Environmental Technical Studies				
87	Permits, HRS 343 EIS and NEPA Approvals				
296	Construction				



Kawailoa Wind Farm

Compliance Matrix

1	Kawailoa Wind Farm Project					
2	Compliance Matrix					
3						
4	Report Number:	0		= Items pending/awaiting action		
5	Date:	11/22/11		= Urgent Items pending		
6						
7						
8	Item	Wind Farm	Mt. Ka'ala	Status	Update	Comments
9						
10	Conditional Use Permit No. 2011/CUP-76 (Issued by Dept. of Planning and Permitting on October 26, 2011)					
19	Special Management Area (SMA) Minor Permit No 2011/SMA-44 (Issued by Dept. of Planning and Permitting on October 26, 2011)					
24	Final Environmental Impact Statement (Accepted by DBEDT on July 20, 2011)					
25	Climate and Air Quality					
37	Geology, Topography and Soils					
50	Hydrology and Water Resources					
65	Biological Resources - Flora					
75	Biological Resources - Fauna					
97	Historic, Archeological, and Cultural Resources					
103	Visual Resources					
105	Noise					
108	Transportation & Traffic					
113	Military Operations					
121	Hazardous Materials					
127	Public Safety					

Permitting Success

- **Agencies:** “You’re not doing this alone!”
- **Team:** Info & Process **Coordination** 24-7
 - Work Closely with Agencies
- **Strategize** Pathways to Streamline Process
 - Avoid Conflicts & Solve Issues
- Enable **Quick Decisions**
 - Support Agencies with Information Needed
- **Be Flexible** in the Evolution of Projects

Presenter Contact Information

Paul Luersen, AICP

Senior Environmental Planner

CH2M HILL - Honolulu

808-440-0201

Jeffrey Overton, AICP

Principal Planner

Group 70 International, Inc. - Honolulu

808-523-5866