

State Permitting, Resources & Tools

Department of Business, Economic
Development & Tourism

Rodney Funakoshi, OP
Robert Hines, DBEDT





Bird's-eye View
of DBEDT
Agencies with
Regulatory
Authority

DBEDT

Office of
Planning

Land Use
Commission

Hawaii Community
Development
Authority

Hawaii Film Office

Hawaii Housing
Finance &
Development
Corporation

State Land Use Commission

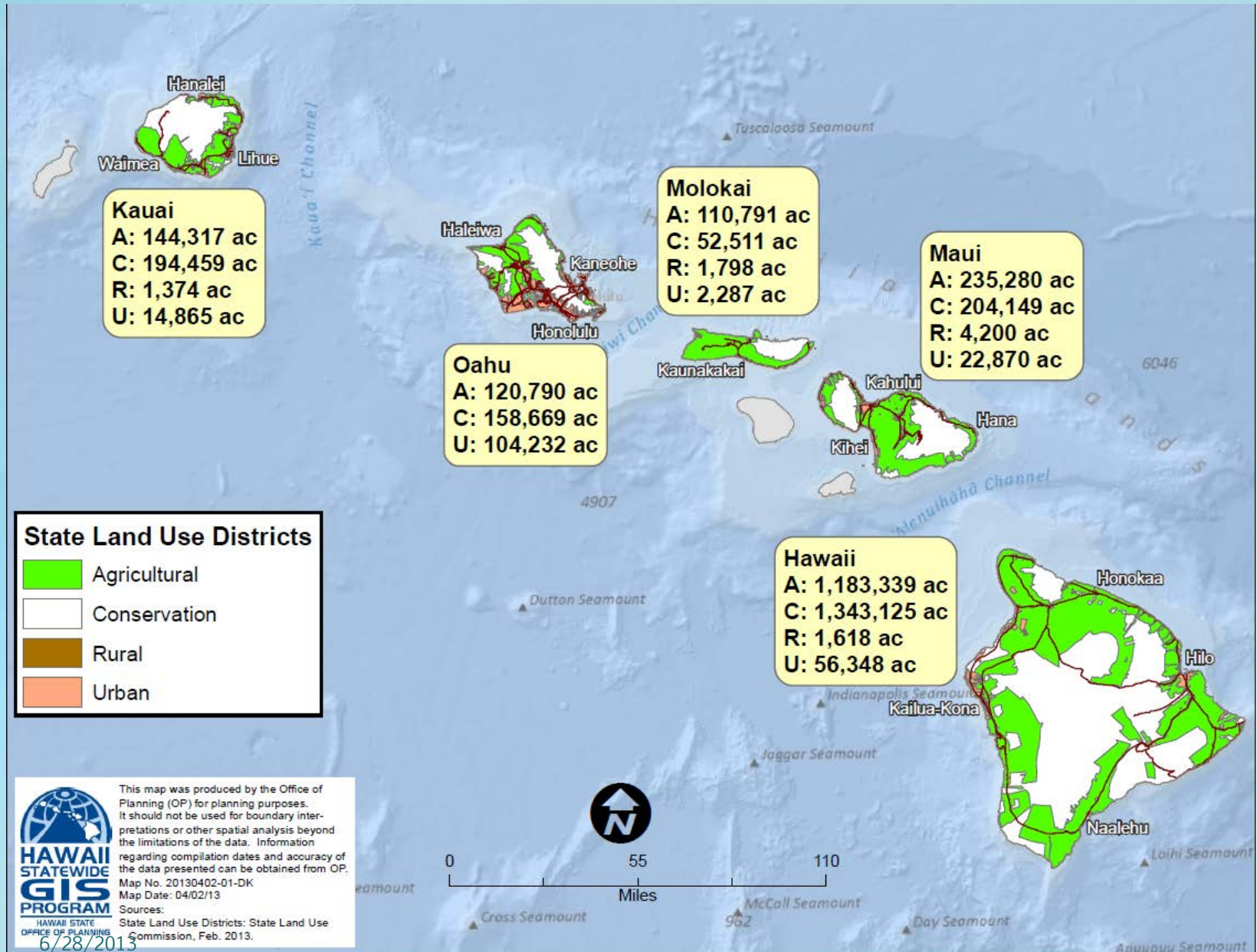
Ensure orderly growth of the State by protecting and encouraging the use of lands for long term public benefit.

(Boundary petitions, Special Permits, IAL)

Office of Planning's Role

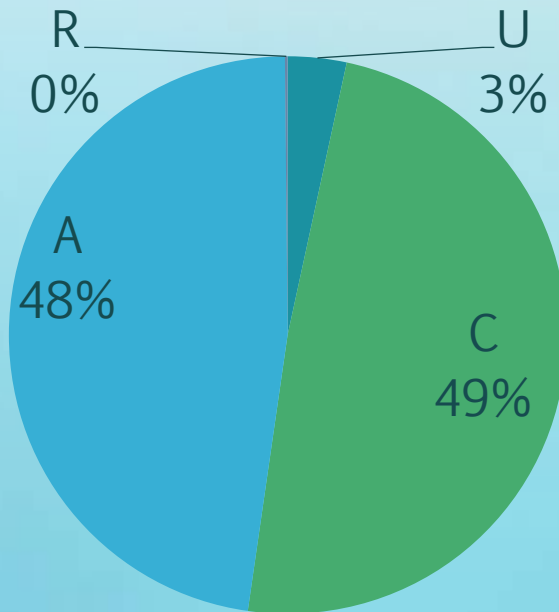
Coordinate and present the State's position in
LUC proceedings

State Land Use Districts (Feb 2013)

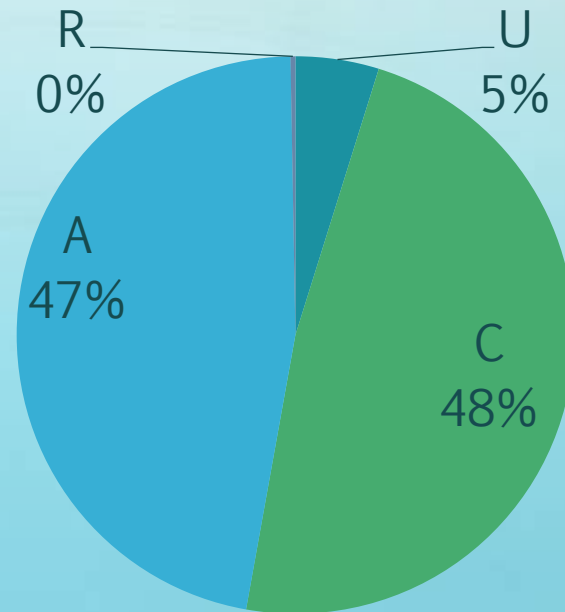


State Land Use Districts

1969



2012

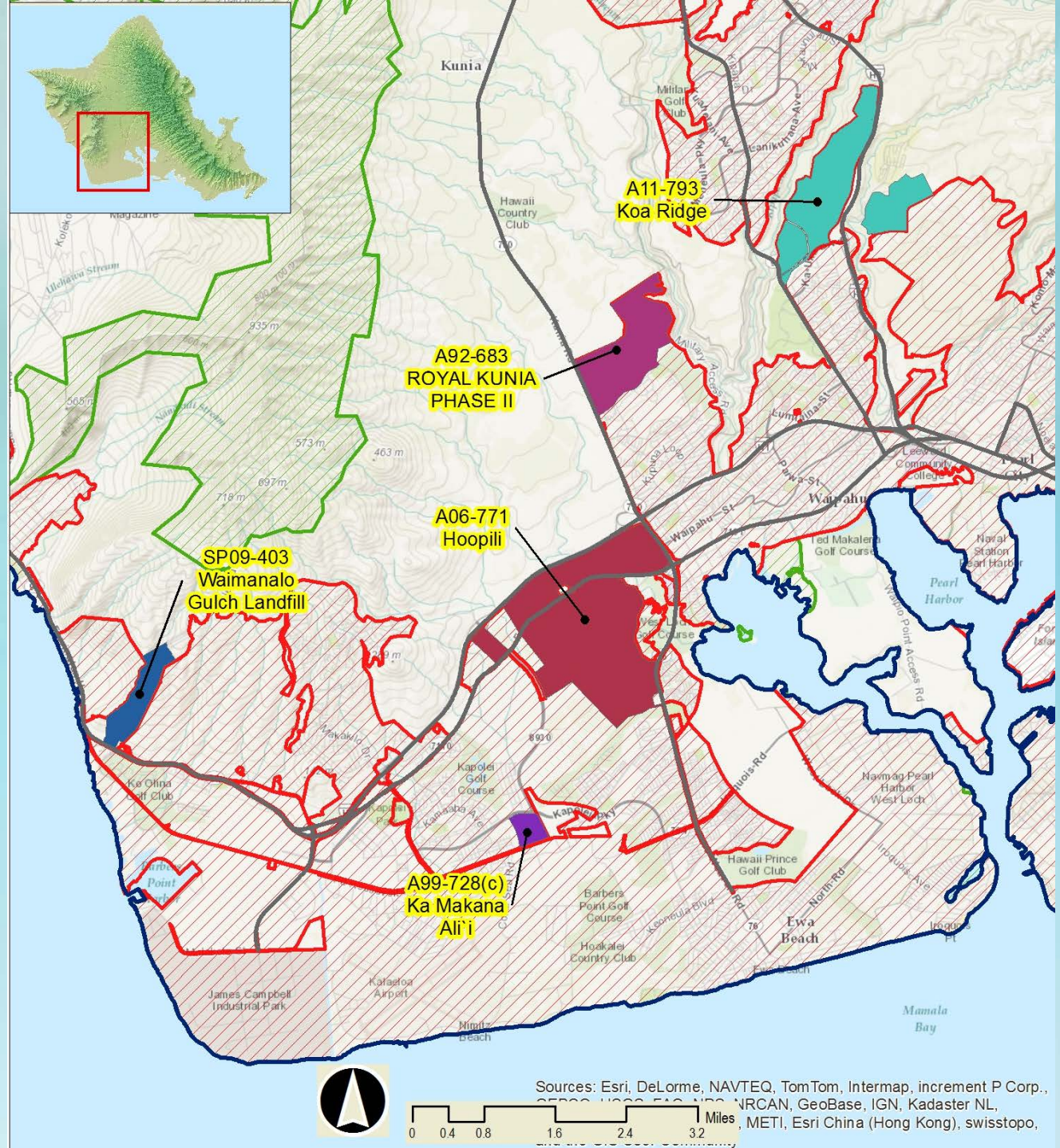


Lands Designated as IAL

(Important Agricultural Lands)

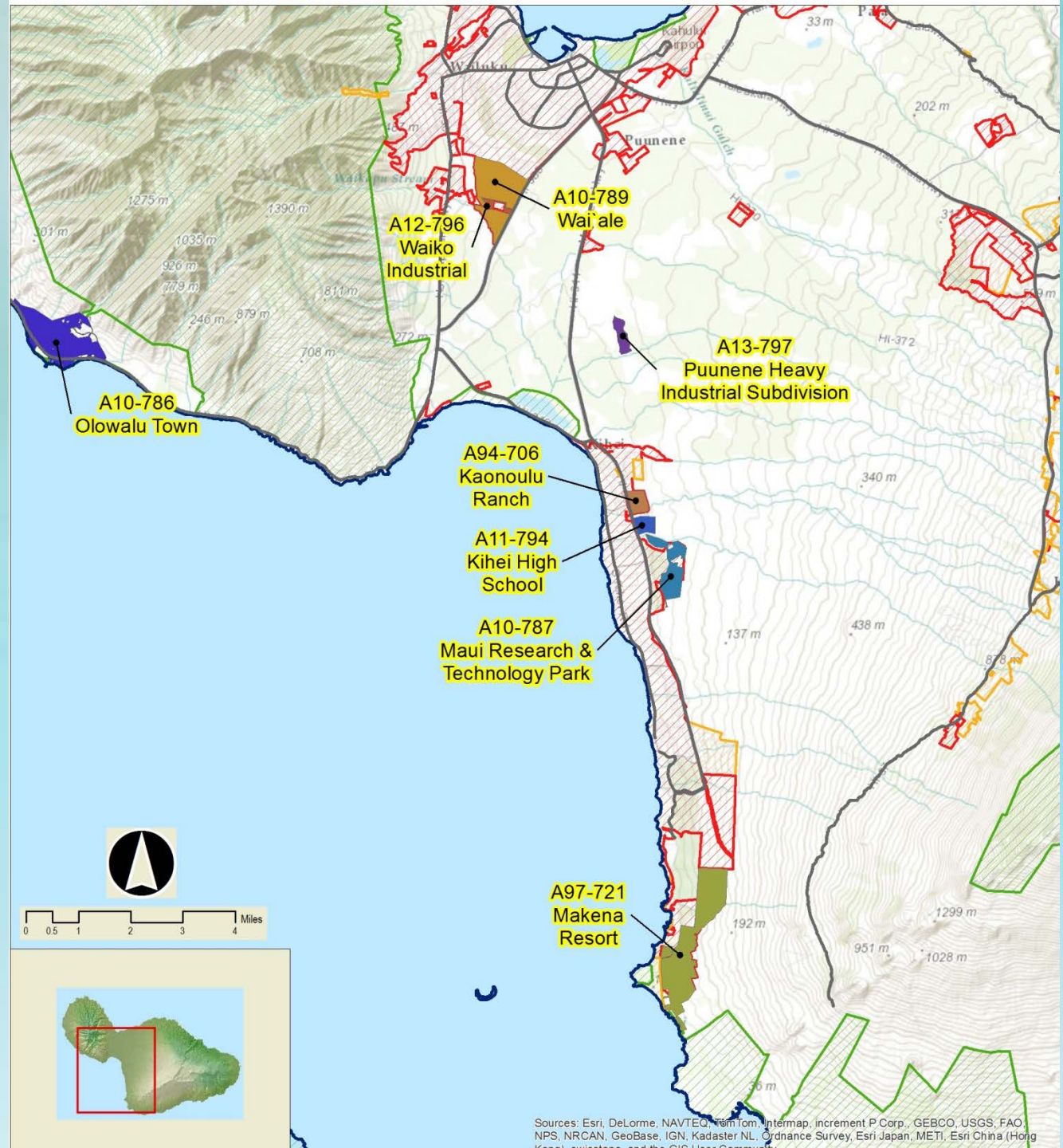
<u>Year</u>	<u>Acres</u>
2009	30,875
2010	--
2011	58,984
2012	--
2013	<u>11,026</u>
Total	100,885

City & County of Honolulu



6/28/2013

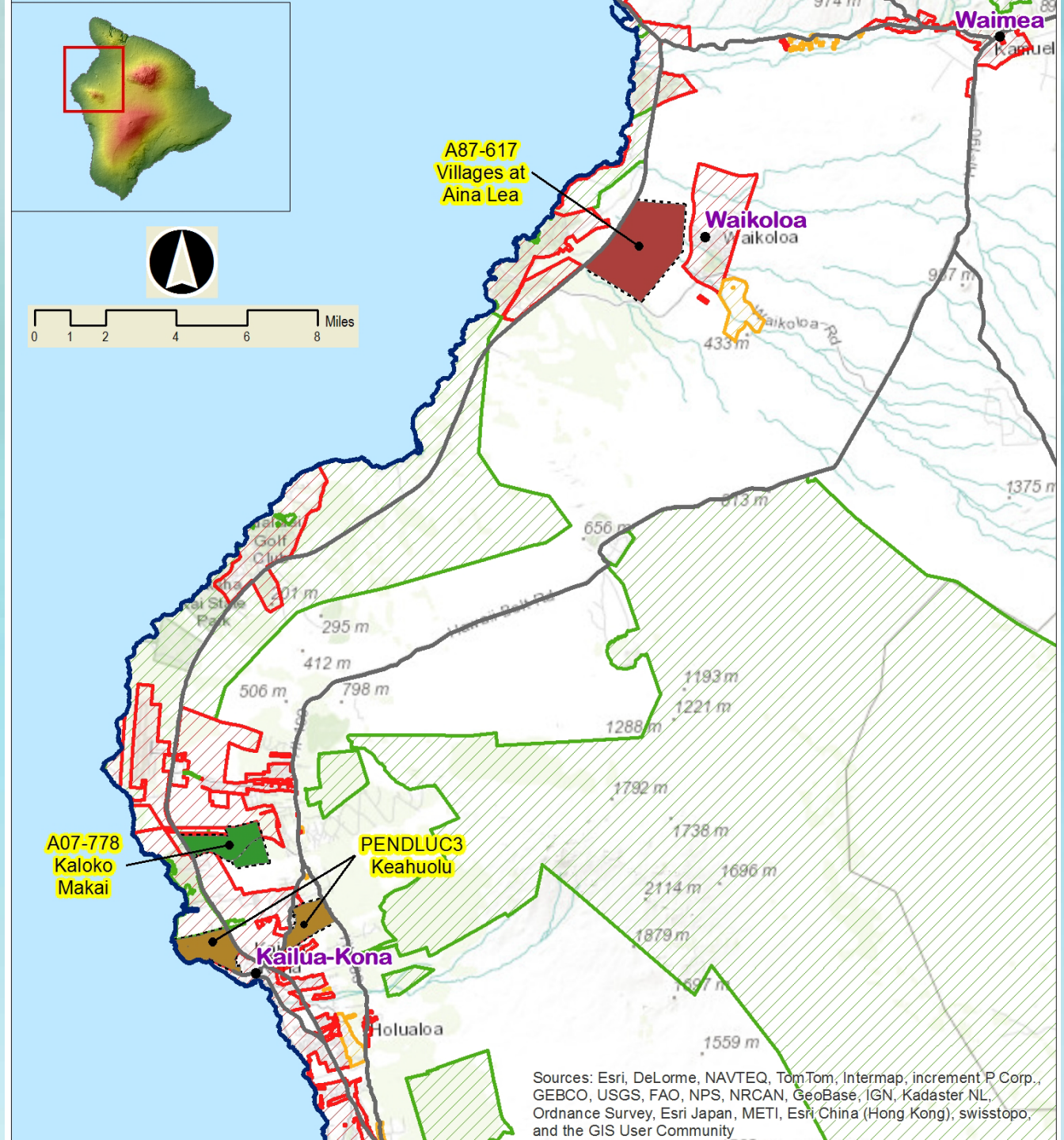
County of Maui



6/28/2013

County of Hawaii

6/28/2013

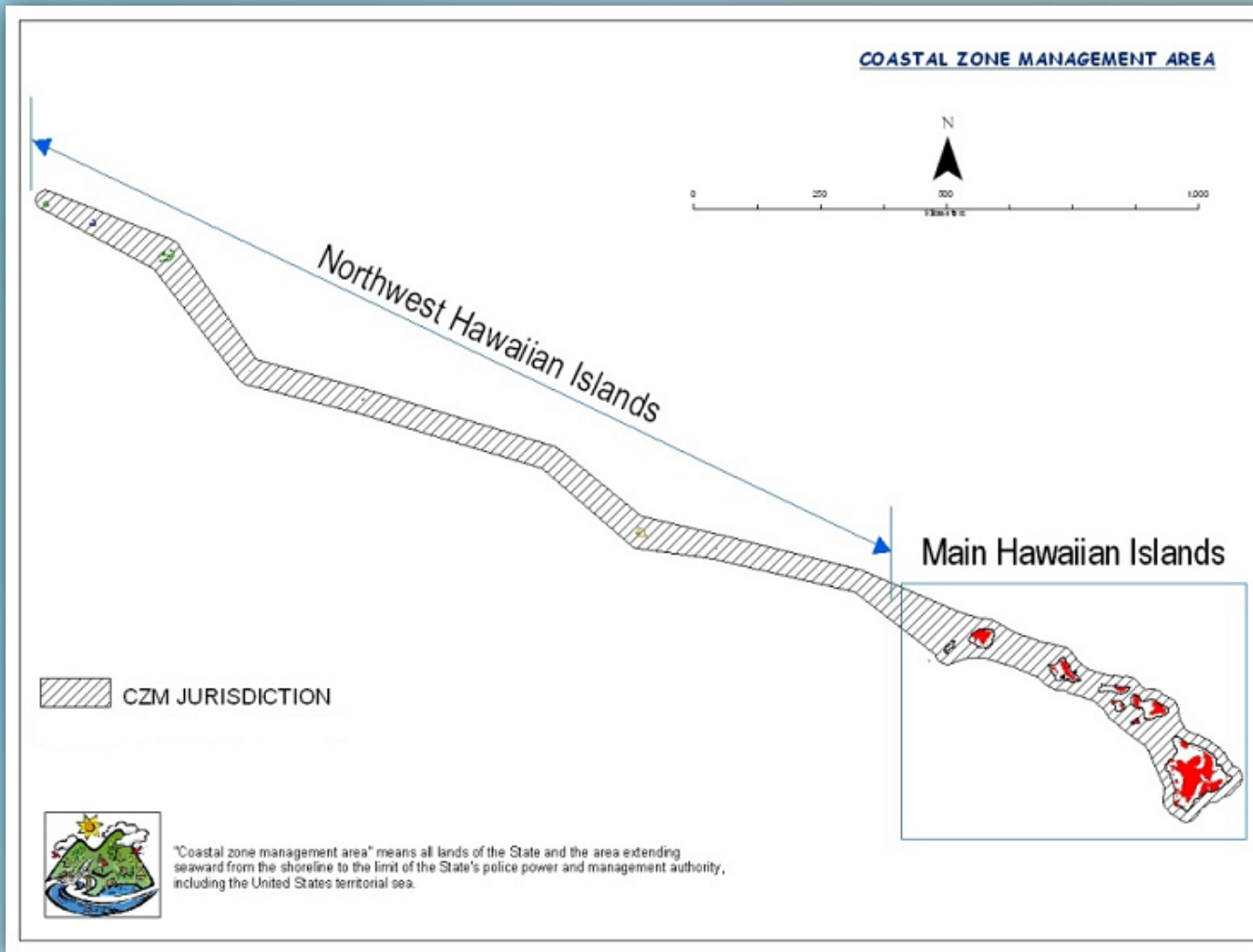


Office of Planning (CZM)

- Federal Consistency review
- Special Management Area (SMA) Permit



Hawaii CZM Area – Entire State

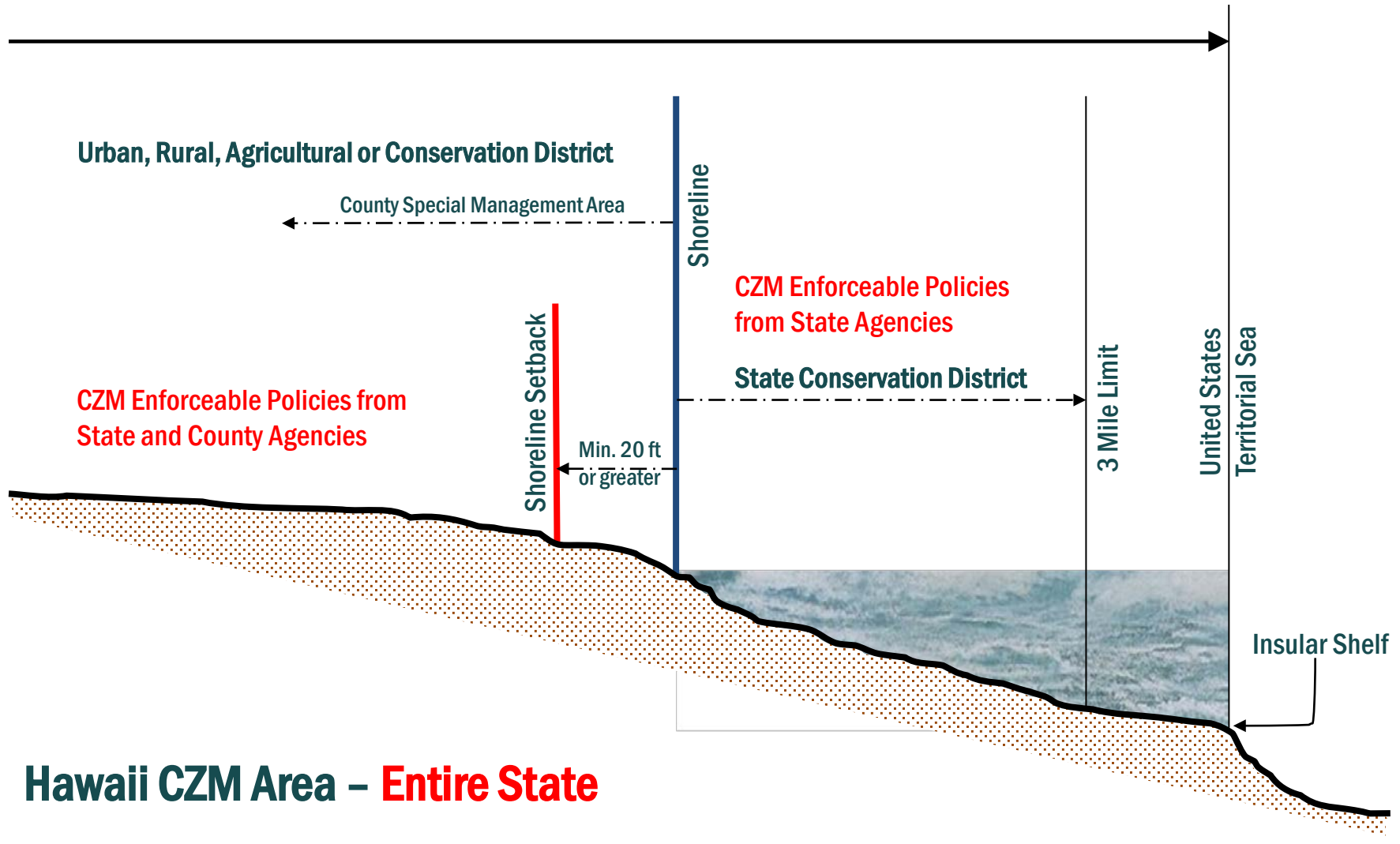


All lands within the State and seaward to the limit of the State's jurisdiction, including the U.S. territorial sea.

Federal Consistency Review

- Triggers:
 - Federal agency activities or development projects
 - Federal permit required for activities or projects (e.g. Army Corps of Engineers Permit)
 - Federal financial assistance activities

Office of Planning—SMA Permit



Office of Planning—SMA Permit Shoreline Setbacks



SMA Major Permit *vs.* SMA Minor Permit



- Key Factor -- Potential substantial adverse environmental or ecological effect, taking into account cumulative effects
- Valuation of Development -- less than \$500,000 – Minor Permit

Role of Office of Planning (OP) in SMA Permitting

- **Oversee consistency of SMA permit system**
- **Provide CZM/SMA training sessions**
- **Provide SMA permit guidance**
- **Review SMA boundary contractions**
- **Review and approve SMA applications in Hawaii Community Development Authority districts (Kakaako and Kalaeloa)**

Adequate access to publicly owned beaches, recreation areas and natural reserves



Solid and liquid waste treatment and management to minimize adverse effects on coastal resources



Alterations to existing land forms and vegetation shall cause minimum adverse effect to water resources, and scenic & recreational amenities



Minimizing danger of **coastal hazards**



Preservation of **historic and archaeological resources**





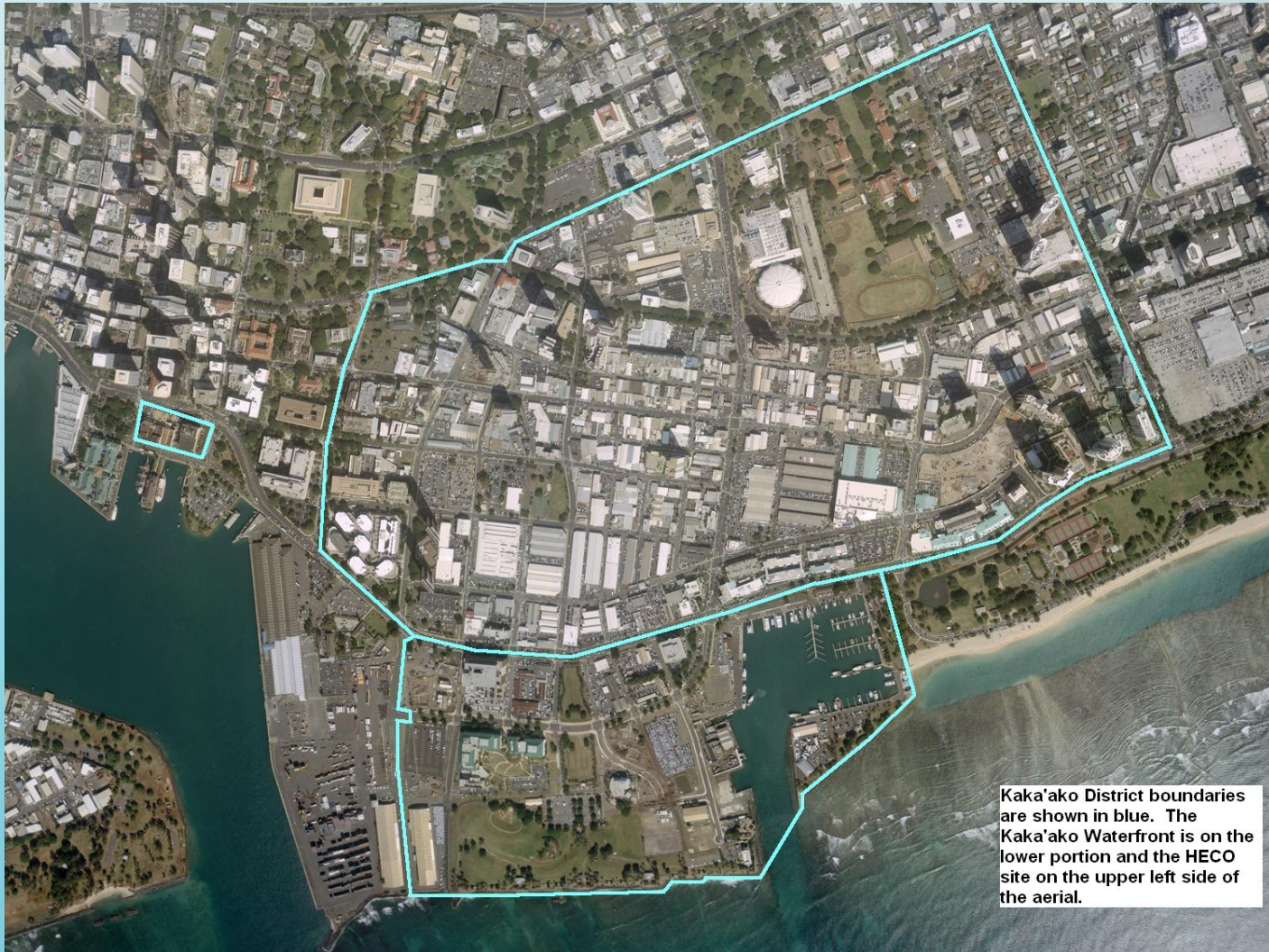
Hawaii Community Development Authority

Building Sustainable Communities

Community Development Districts:

- Kakaako
- Kalaeloa
- He'eia

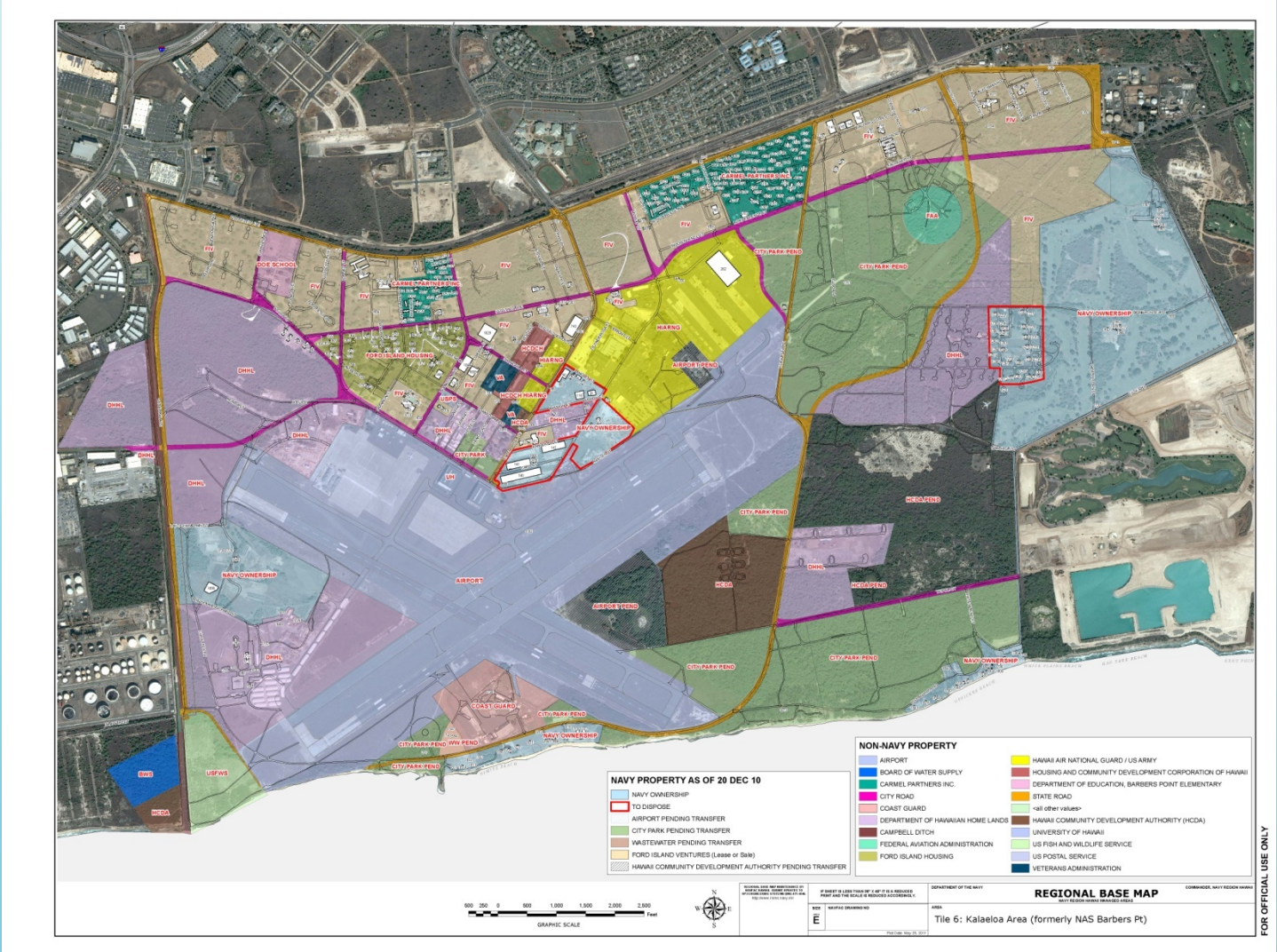
Kakaako Community Development District (Mauka and Makai)



Kaka'ako District boundaries are shown in blue. The Kaka'ako Waterfront is on the lower portion and the HECO site on the upper left side of the aerial.

Kalaeloa Community Development District

Former Barber's Point Naval Air Station



Development Permits within the Kakaako and Kalaeloa CDD:

- Developments must comply with Area Plan and Rules
- Sustainable, Livable Urban Communities
 - Work, live, visit, learn and play
 - Plans are developed around Smart Growth concepts
 - Pedestrian friendly, human scale, multi-modal, mixed use.
 - Sustainability Requirements:
 - New Projects, additions and existing buildings (w/25% greater floor area) must be LEED certified.
 - Applicants may use other green building evaluation system.



**HAWAII
STATEWIDE
GIS
PROGRAM**

HAWAII STATE OFFICE OF PLANNING

Resources and Tools

Hawaii State GIS Website: <http://planning.hawaii.gov/gis>

Hawaii Statewide GIS Program | Office of Planning - Mozilla Firefox

File Edit View History Bookmarks Tools Help

Hawaii Statewide GIS Program | Office of...

← planning.hawaii.gov/gis/

Most Visited Hawaii GIS Portal - Asa... Blogs

hawaii.gov Text size: Smaller | Reset | Larger Stay Connected


State of Hawaii
Office of Planning

search this site Search.USA.gov

Home About OP Programs Regulatory Resources Selected Plans Planner's Toolbox OP Reports

Home > [Hawaii Statewide GIS Program](#)

HAWAII STATEWIDE GIS PROGRAM



Hawaii Statewide GIS Program

What is the GIS Program?

The Office of Planning GIS Program leads a multi-agency effort to establish, promote, and coordinate the use of geographic information systems (GIS) technology among Hawaii State Government agencies. The State Office of Planning is responsible for the planning and coordination of activities that are critical to the State's enterprise GIS. The primary goal of the Statewide GIS Program is to improve overall efficiency and effectiveness in government decision-making.

GIS LINKS

- GIS Data
- Maps, Tools, and Applications
- Other Resources
- GIS REST Services
- HBGN

State GIS Data

Administrative Layers

Agricultural Land Use maps (OP/DOA)
Ahupuaa Boundaries (DLNR)
Census Tract Boundaries (US Census)
Development Plan Boundaries (OP)
Election Precincts (DAGS/LG)
Enterprise Zones (DBEDT)
Government Land Ownership (OP/Counties)
Harbors (DOT)
Hydrographic Units (OP/DLNR)
Judicial Districts (OP)
State Land Use District Boundaries (LUC)
Legislative Districts (DAGS/LG)
Marine Life Conservation Districts (OP/CZM)
National Marine Whale Sanctuary (NOAA)
Parcels (Counties)
Parks (DLNR, Counties)
Reserves (DLNR)
Special Management Areas (OP, CZM)
Water Quality Control Sites (OP/CZM)
Wells (DLNR)

Ocean Layers

Bathymetry (Various)
Bottom Type (NOAA)
Coastal Resources (OP/CZM)
Fish Aggregating Devices (OP/DLNR)
Marine Managed Areas (DLNR)
Ocean Recreation Areas (CZM)
Water Quality Classifications (DOH)

Basemap Layers

Coastlines (OP/USGS)
Coastal Names (OP)
Dams (DLNR)
Elevation Contours (OP/USGS)
Geographic Names (OP/USGS)
Hydrography (OP/USGS)
Public & Private Schools (OP/DOE)
Roads (OP/DOT/Counties)
Trails

Hazard Layers

Flood Hazard Zones (FEMA)
Hurricane Iniki Overwash Areas (OP)
Lava Flow Areas (DBEDT)
Tsunami Wave Heights (OP)
Tsunami Evacuation Zones (PDC)
Volcano Hazard Zones (OP/USGS)
Wildfire Risk Ratings (DLNR)

County Layers

Council Districts
Development Plan Areas
Fire Stations
Neighborhood Board Boundaries
Ohana Zoning
Parcels
Parks
Potable Water Mains
Public Facilities
Roads
Storm Drains
Sewers
Shelters
Zoning

Natural Resource Layers

Aquaculture
Aquifers (DLNR/DOH)
Bird Habitat Ranges (OP)
Body Surfing Sites (OP)
Coral Reefs (NOAA)
Critical Habitat (USFWS)
Fish Habitat Areas (DLNR)
Fishponds (DLNR)
Former Sugar Cane Lands (OP)
Former Pineapple Lands (OP)
Geothermal Resource Areas (DBEDT)
Important Agricultural Lands (OP/DOA)
Land Study Bureau Lands (OP/DOA)
Perennial Streams (OP/DLNR)
Rainfall (UH-Geography)
Rain Gages (UH-Geography)
Rare and Endangered Species (TNC)
Soils (NRCS)
Solar Radiation (OP/DBEDT)
Threatened and Endangered Plants (OP/DLNR)
Vegetation (USGS)
Watersheds (OP)
Wetlands (NWI)
Wind Energy Resources (DBEDT)

Other Data Available on State GIS

Digital Elevation Models (USGS)
Digital Raster Graphics (USGS)
IfSAR Elevation Data (NOAA)
Various aerial photography (Various)
WorldView2 Satellite Imagery (OP/USGS)

ArcGIS Online site for delivering content – web maps, web apps, data



<http://histategis.maps.arcgis.com/home/index.html>

Ready to use maps

Various Maps | Office of Planning - Mozilla Firefox

File Edit View History Bookmarks Tools Help

Hawaii Statewide GIS Program Various Maps | Office of Planning

planning.hawaii.gov/gis/various-maps/

Most Visited Hawaii GIS Portal - Asa... Blogs

OTHER MAPS

Agricultural Lands of Importance to the State of Hawaii (ALISH):

- State of Hawaii - [large map \(1.6 MB\)](#) | [small map \(336 KB\)](#)
- Island of Hawaii - [large map \(4.7 MB\)](#) | [small map \(300 KB\)](#)
- Island of Kauai - [large map \(5.2 MB\)](#) | [small map \(587 KB\)](#)
- Island of Maui - [large map \(2.3 MB\)](#) | [small map \(451 KB\)](#)
- Islands of Molokai and Lanai - [large map \(1.9 MB\)](#) | [small map \(279 KB\)](#)
- Island of Oahu - [large map \(3.6 MB\)](#) | [small map \(406 KB\)](#)

Agricultural Land Use Maps (ALUM):

- [Hawaii](#)
- [Kauai](#)
- [Maui](#)
- [Molokai-Lanai](#)
- [Oahu](#)

ALISH within State Owned Agricultural Lands:

- [Kauai](#) | [Oahu](#) | [Molokai](#) | [Maui](#) | [Hawaii](#)

Critical Habitat, Proposed (2012):

- [Island of Hawaii](#)

Enterprise Zone Maps:

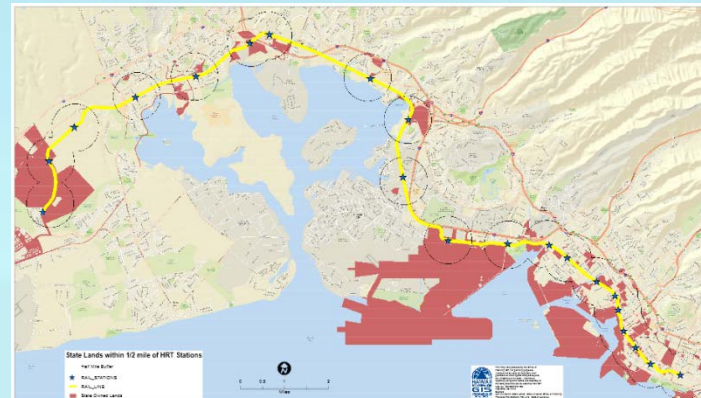
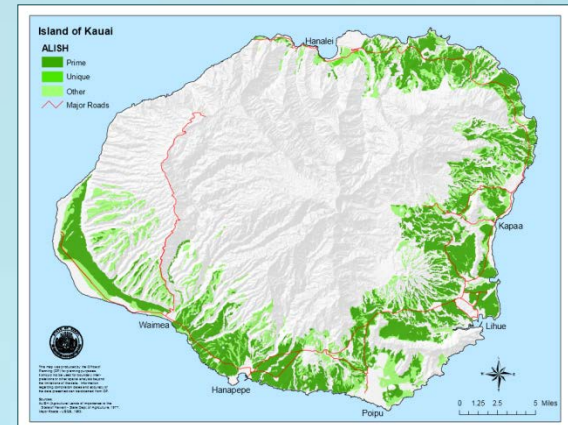
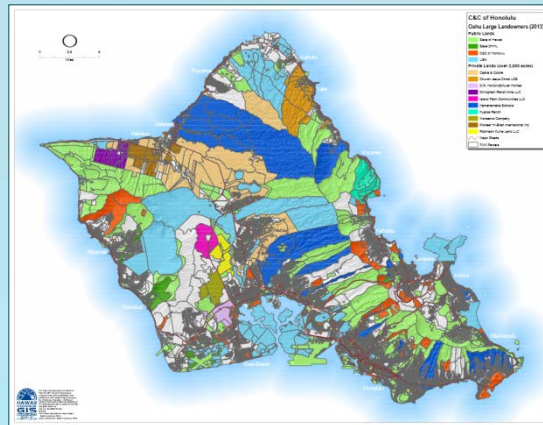
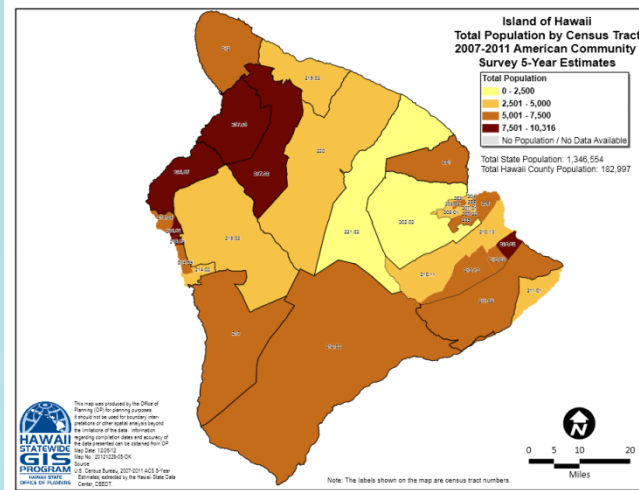
- [PDF](#)

Geothermal Maps (By GeothermEx, Inc.):

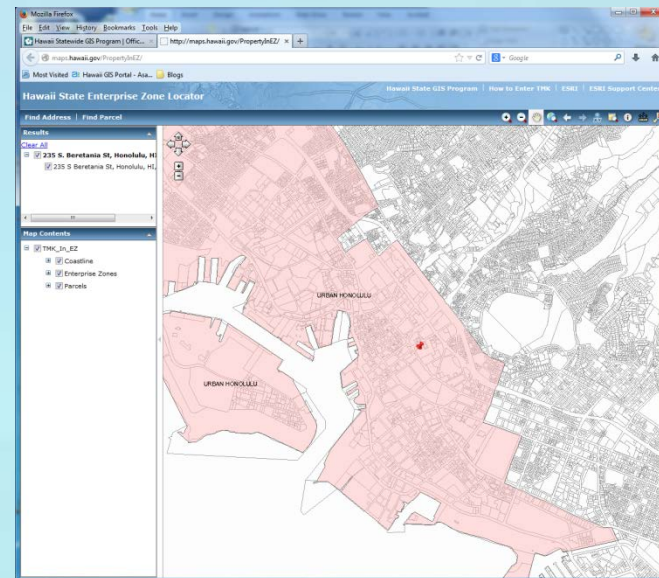
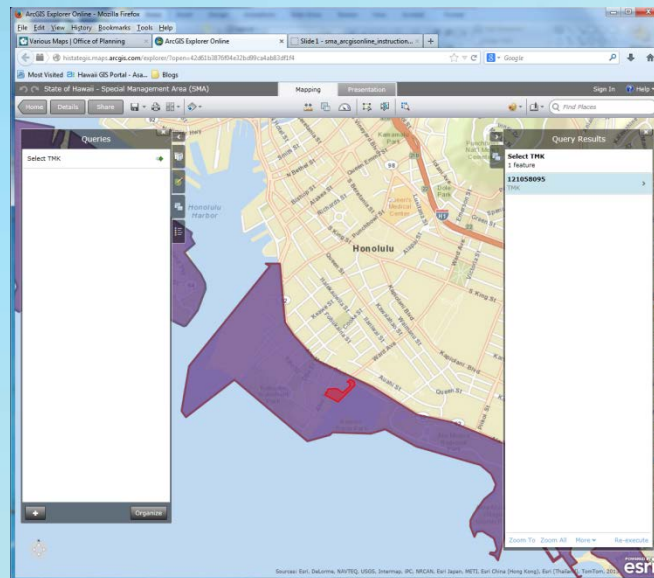
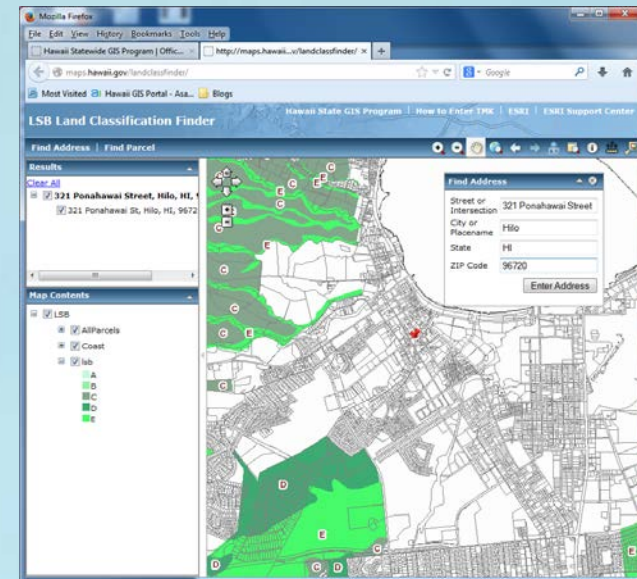
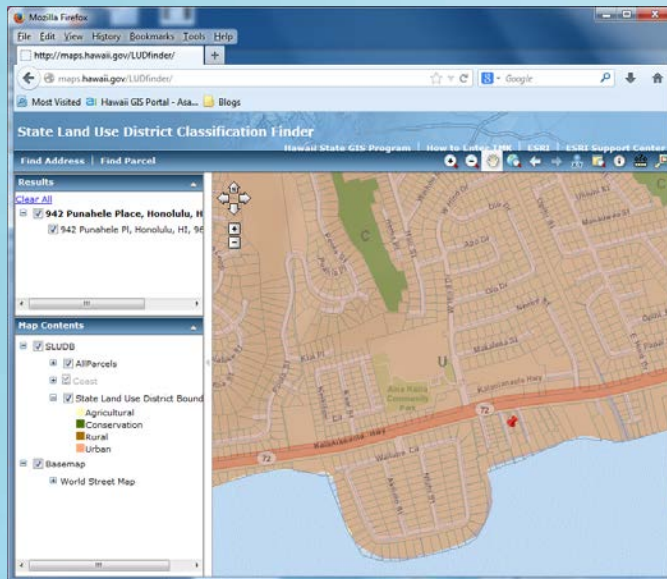
- [Geothermal Resource Areas](#)
- [Areas with Potential for Warm Ground Water](#)

Hawaii Agriculture Conference Maps (2012):

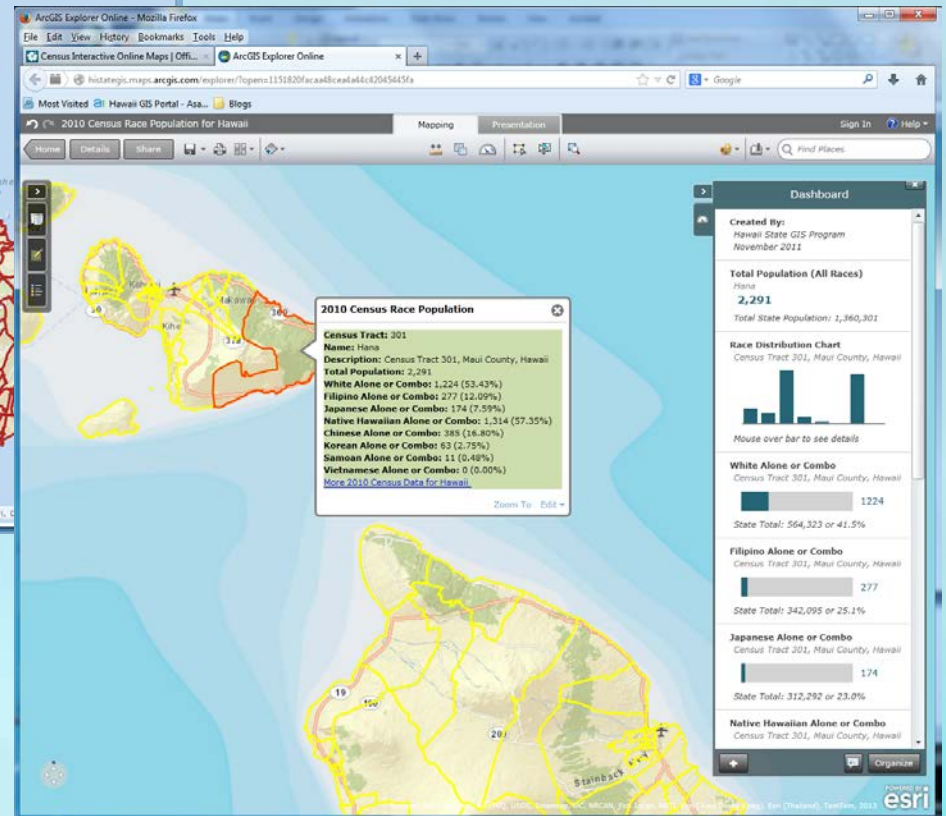
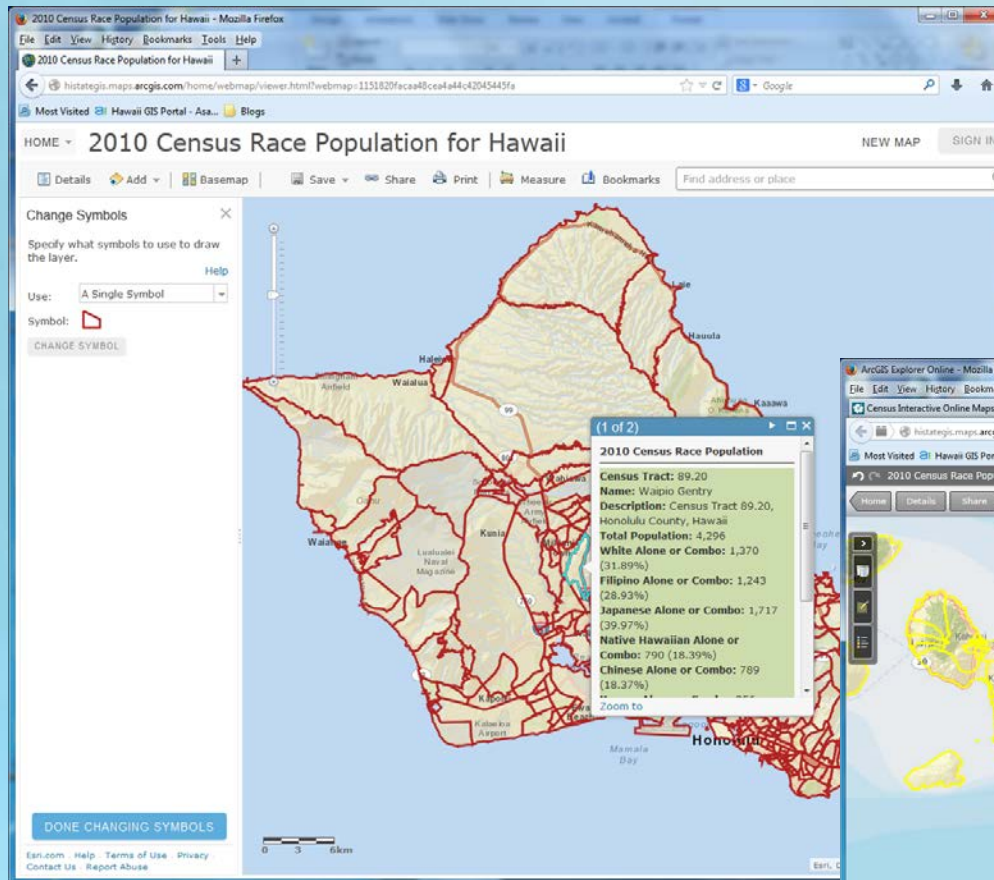
- [State Land Use District Map](#) (updated 2013)
- [ALISH Map](#)
- [IAL \(Important Ag. Lands\) Map](#) (updated 2013)



Locator Applications – State Land Use Districts, LSB Soils, SMA, EZ



Demographic Profile Applications



OP Website Planner's Toolbox

The screenshot displays the homepage of the State of Hawaii Office of Planning. The header includes the state logo, the text "State of Hawaii Office of Planning", a search bar with "Search USA.gov", and social media icons for Twitter and Facebook. The main navigation bar contains links for Home, About OP, Programs, Regulatory Resources, Selected Plans, and Planner's Toolbox. The Planner's Toolbox dropdown menu is open, listing various tools and resources. A red bracket on the right side of the menu highlights the items from "Adapting to Climate Change" down to "Transit-Oriented Development".

State of Hawaii
Office of Planning

Search USA.gov

Home About OP Programs Regulatory Resources Selected Plans Planner's Toolbox

OP Reports

2013 Ocean Resources Management Plan

OCEAN RESOURCES MANAGEMENT PLAN
Read More

The State of Hawaii, Office of Planning, gathers, analyzes, and provides information to the Gov assist in the overall analysis and formulation of state policies and strategies.

The purpose of the Office is to (1) provide central direction and cohesion in the allocation of res and effectuation of state activities and programs, and (2) effectively address current or emergin and opportunities.

The Office works closely with local, state, and federal government agencies; the University of H and various community stakeholders to achieve these objectives.

The Office is divided into the **Land Use Division** and Planning Division. The Planning Division the **Coastal Zone Management Program**, **Special Plans Branch**, and the **Geographic Inform Program**

Adapting to Climate Change

Brownfields Revolving Loan Fund

Coastal Hazards

Cumulative & Secondary Impact (CSI): Stormwater Impact Assessment

GIS Data, Maps, Tools, Apps

Low Impact Development

Rural Economic Development

Rural Policy and Best Practices Project

Transit-Oriented Development

Planner's
Toolbox

Mahalo!

State Office of Planning

Web: planning.hawaii.gov

Twitter: [PlanningHlgov](https://twitter.com/PlanningHlgov)

Facebook: www.facebook.com/OfficeofPlanning.Hlgov