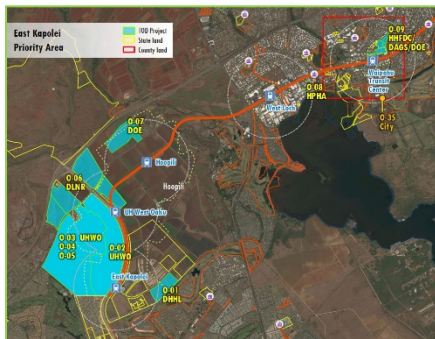


## East Kapolei



## Aloha Stadium / Hālawā



## Iwilei-Kapālama



### Project Description

The project will produce a State Transit Oriented Development (TOD) Plan for project implementation and investments on State lands along the Honolulu Rail Transit Project corridor, particularly for projects that are beyond the scope and resources of any individual State agency to provide. In building off work that has already been done, development of the plan will require extensive coordination and collaboration with State and City agencies, as well as other stakeholders in each priority area.

The process will focus on conceptual area / site planning, infrastructure assessment, and access improvements analysis to determine shared investments, funding, and timeframes for critical infrastructure and other improvements necessary to enable development of State TOD projects. The plan will also serve as a critical tool for the State to assist and track actions needed to facilitate shared infrastructure investments and individual State agency project development along the rail corridor.

Such investments include, for example, wastewater system improvements in the Iwilei-Kapālama area that currently constrain TOD development potential for agencies such as HHFDC, DAGS, UH Honolulu Community College, as well as future phases of HPHA’s Mayor Wright Homes redevelopment. While each of the priority areas are likely to have different infrastructure needs and timelines, the project as a whole will identify opportunities for collaboration on infrastructure investments and an overall strategy for infrastructure delivery that will benefit TOD project implementation on State lands and in surrounding neighborhoods.

### Project Timeframe

#### June 2018–December 2019

- |                                   |   |
|-----------------------------------|---|
| <b>Phase 1:</b> Jun 2018–Dec 2018 | Development of conceptual land use plan for State lands & identification of infrastructure requirements                               |
| <b>Phase 2:</b> Jan 2019–Dec 2019 | Identification of infrastructure costs/financing & development of an infrastructure implementation plan, phasing & financing strategy |

### Project Consultant Team

- |                                       |  |
|---------------------------------------|--|
| <b>PBR Hawaii (Prime)</b>             | Master planning, project management, and stakeholder outreach and engagement |
| <b>RM Towill</b>                      | Civil engineering  |
| <b>David Taussig &amp; Associates</b> | Development financing and alternative delivery methods                       |
| <b>Fehr &amp; Peers</b>               | Transportation engineering and multi-modal system planning                   |
| <b>Callison RTKL</b>                  | TOD master planning and urban design   |
| <b>Ron Ho &amp; Associates</b>        | Electrical engineering and communications                                    |
| <b>ARUP</b>                           | Green infrastructure and sustainable systems design                          |