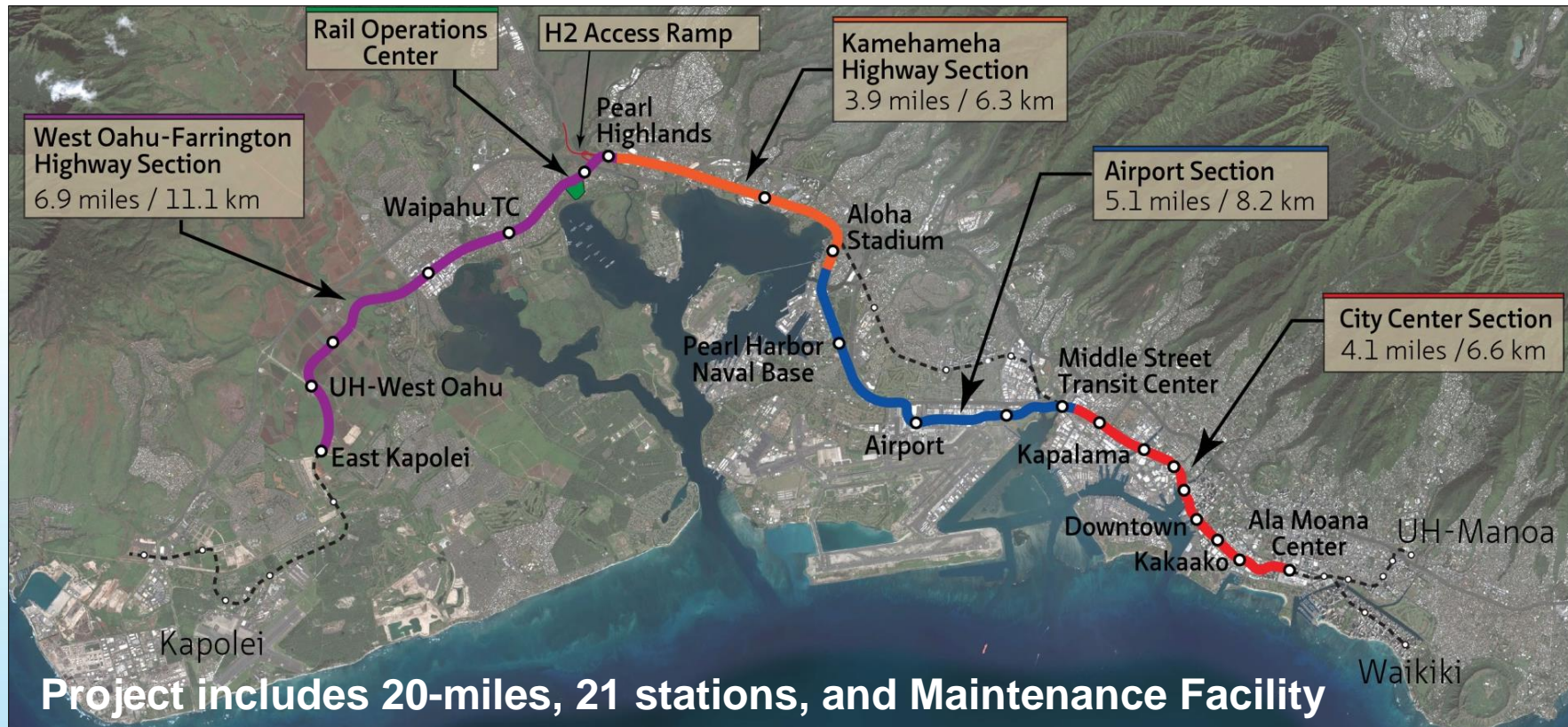




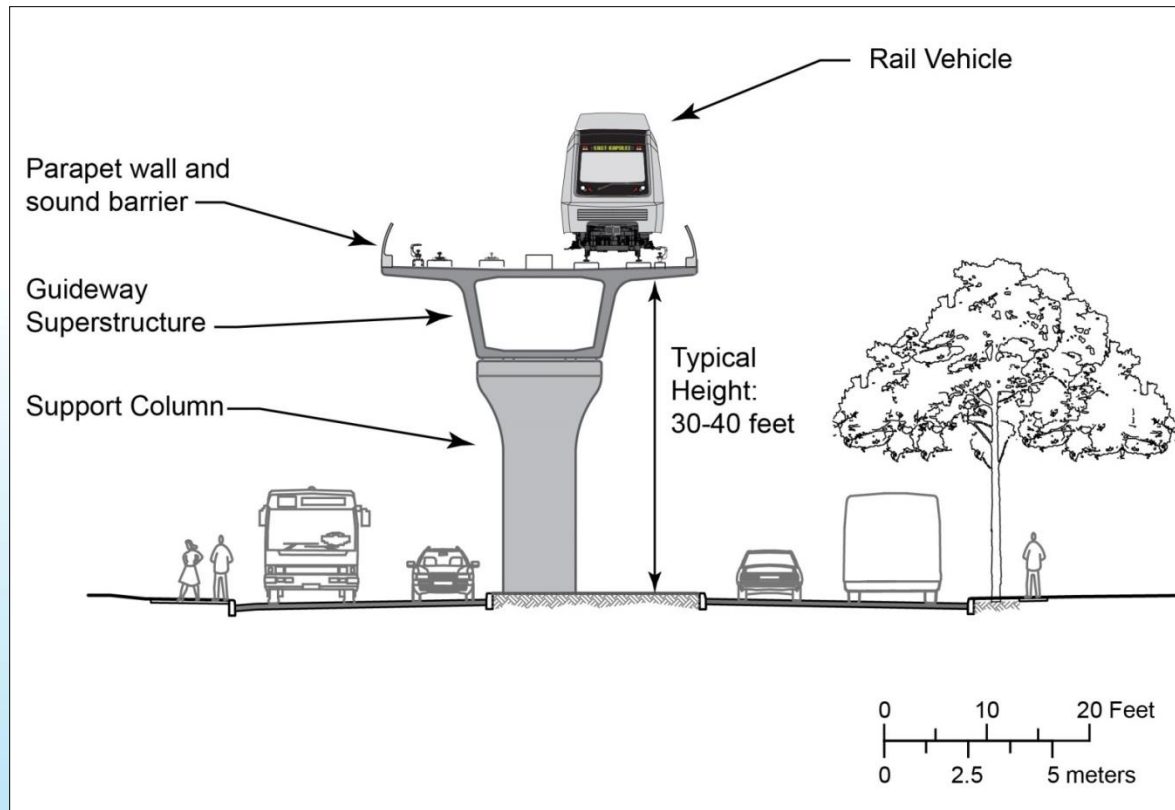
Honolulu Rail Transit Project Overview

October 2016

Project Overview



General Configuration



Stations



Hoopili Station

Trains

- Fleet of 20 trainsets (4-cars)
- 188 Total Seats per train
- 634 Passengers per train (Comfort Load – 3.2 pax/m²)
- Three (3) plug-type doors on side of each car (12 per train)
- Each railcar is 64 feet long and weighs 72,000 pounds
- Two roof-mounted air conditioning units
- Two powered trucks per car with all axles powered
- Closed-circuit TV cameras



Train Interiors

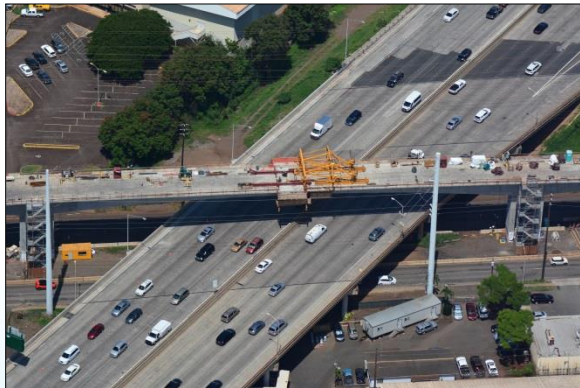


Construction Progress

West Oahu/Farrington Highway: 283 columns and 3,209 segments erected



Construction Progress



Kamehameha Highway: all foundations complete (186) and columns poured (163)

Rail Operations Center



43-acre Maintenance Facility
176,000 square feet of buildings



Station Construction



Cultural Sustainability



Community Building



Middle Loch Connector
Pearl Harbor Historic Trail Extension



Tree Relocation
Waiau District Park



Ai-Goto Building Rehabilitation

Community Integration

Major Activity Hubs

- Park-and-ride lots, bus transit centers
- 7,000 to 10,000 daily boardings (2030)

Suburban Centers

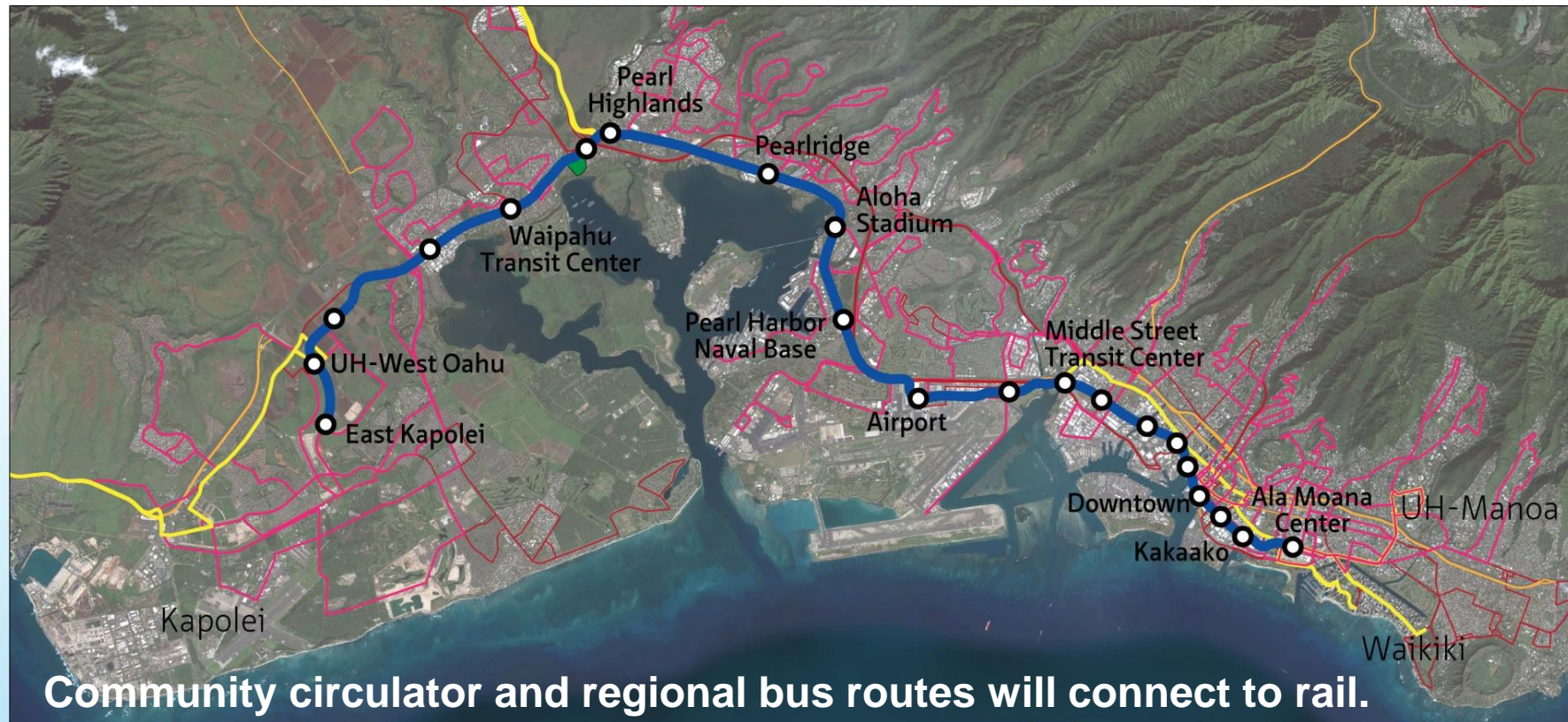
- About 60% will arrive by bus or auto
- 5,000 to 7,000 daily rail boardings

Urban Neighborhoods

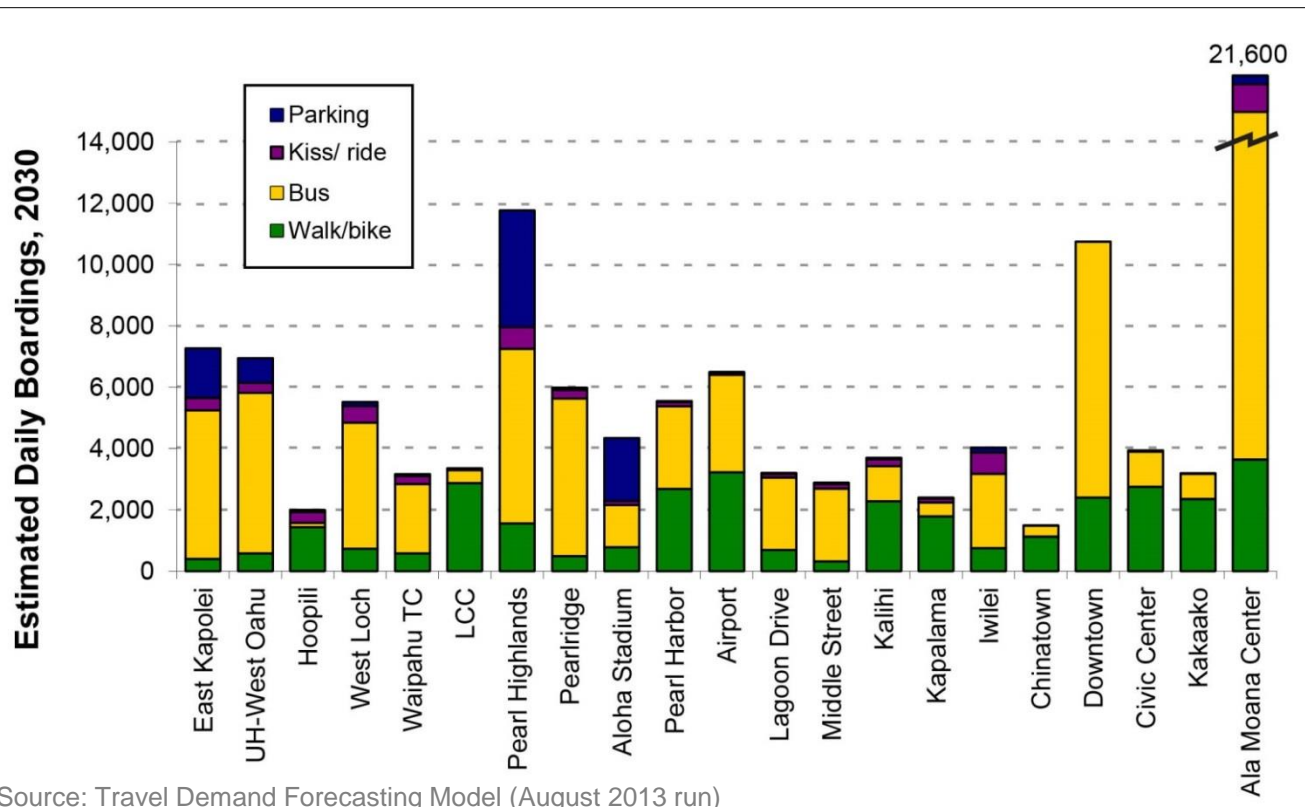
- 60 to 80% will walk to the stations
- 2,000 to 4,000 daily rail boardings



Integrated Bus-Rail Vision

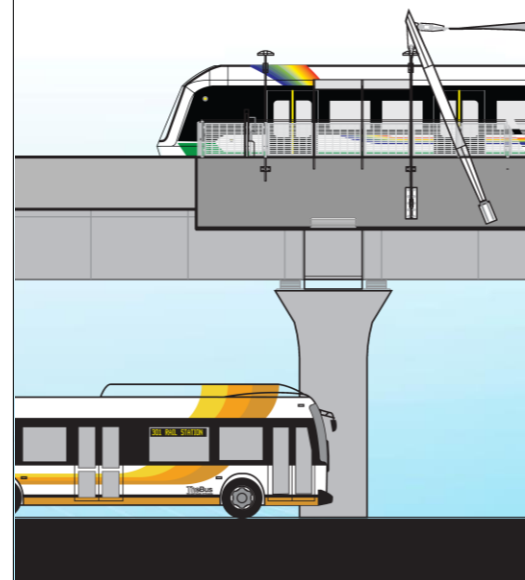


Rail System Access by Mode

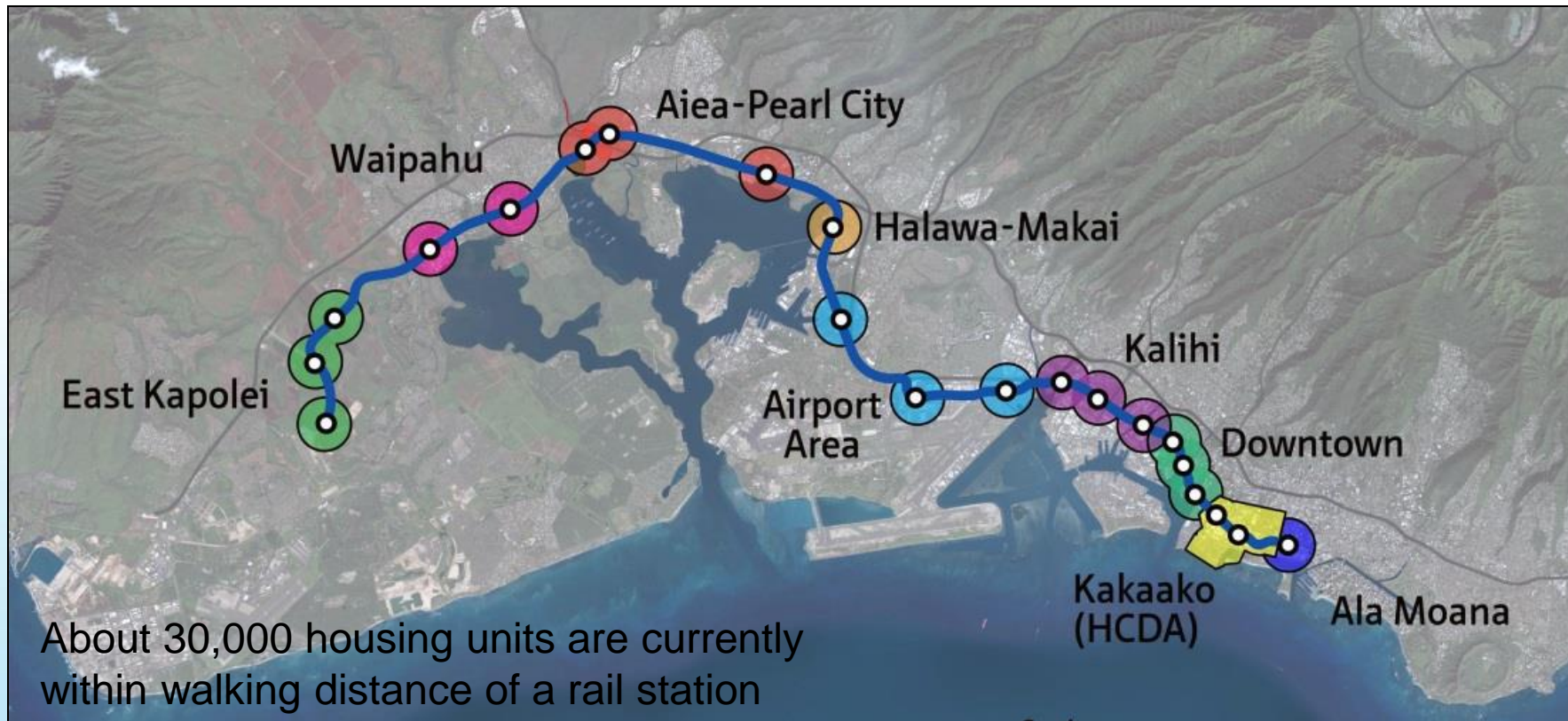


Source: Travel Demand Forecasting Model (August 2013 run)

Buses will play an important role in an integrated islandwide transit network.



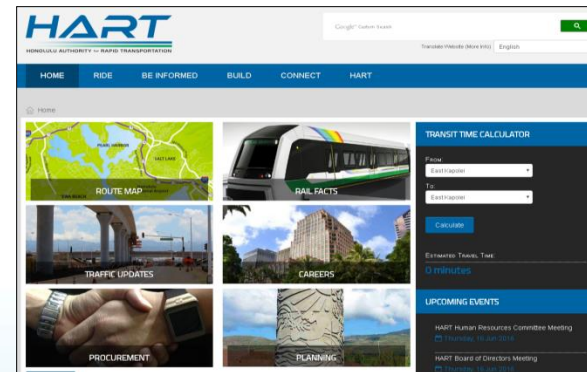
Transit-Oriented Development Plans



Stay Connected



- Weekly Traffic Advisories
- Weekly e-Blast
- Website and Social Media
- Public Access Television Program



HART Rapid Response

24-Hour Project Hotline:
(808) 566-2299

Email inquiries:
info@HonoluluTransit.org

Website Inquiries:
www.HonoluluTransit.org

Mahalo!



HONOLULU RAIL TRANSIT

