

Urban & Community Forestry Program



Heather McMillen, PhD
ISA Certified Arborist
Urban & Community Forester
Division of Forestry and Wildlife



www.Kaulunani.org

@Kaulunani  

Heather.l.mcmillen@hawaii.gov

400 projects
\$3.6 million awarded
\$8 million match

Urban & Community Forestry Program

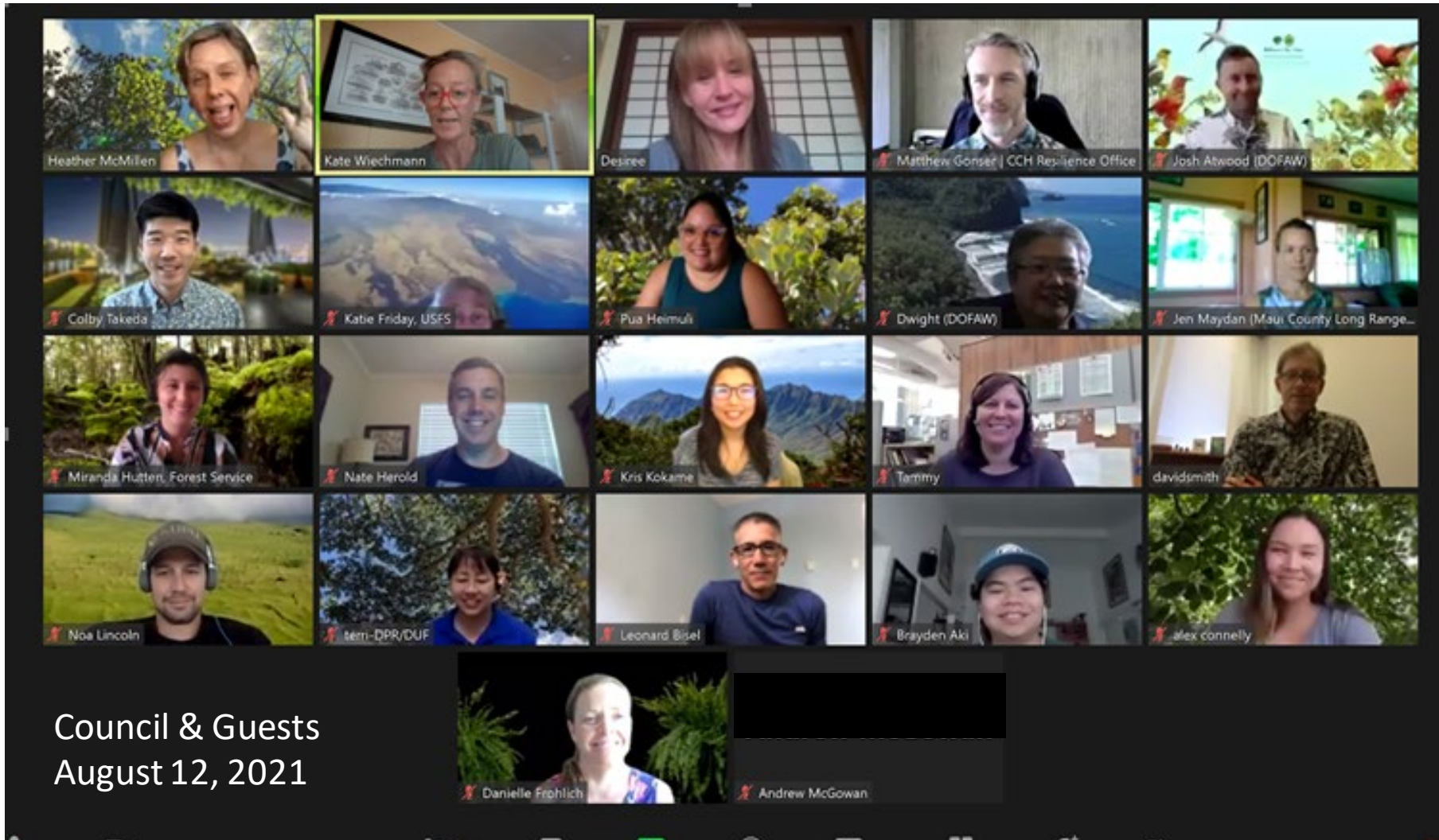


www.Kaulunani.org

@Kaulunani  

Heather.l.mcmillen@hawaii.gov

Kaulunani Advisory Council



Council & Guests
August 12, 2021

Committees

Policy &
Ordinances

Grants & Awards

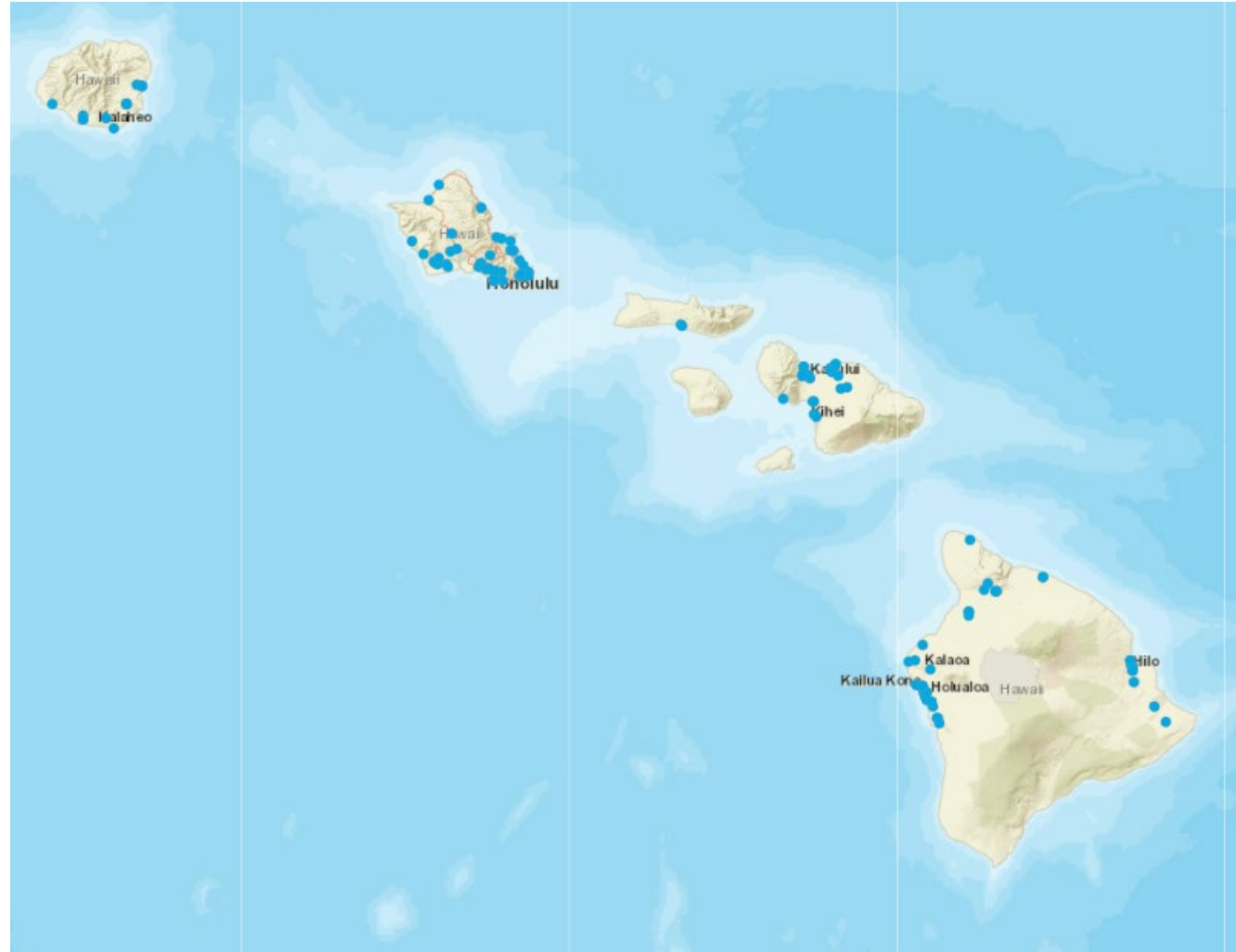
Outreach &
Education

Invasive Species

Diversity & Equity

Trees Planted: 11,164

149 Projects



Healthy Climate Communities, Kailua, O'ahu

85 Projects



Capacity Building

Education & Outreach
104 Projects



Forest Bathing / Green Walks

Technical Tools
12 Projects



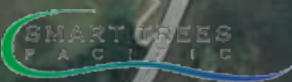
Chainsaw Safety Training



CITIZEN FORESTER PROGRAM

Hawai'i

SINCE 2016



Shannon Noelle Rivera
SRivera@SmartTreesPacific.org
www.SmartTreesPacific.org

Hawaii's Urban Tree Inventory

www.PG-Cloud.com/Hawaii





STRUCTURE



FUNCTION



BENEFITS



VALUE



Citizen Forester Report

Kailua Eco-Benefits



5,548,210 Gallons Runoff
Prevention



6,721 lbs Pollutants
removed



1,116,250 lbs Carbon
Stored



596,462 lbs Carbon
Sequestered



589,003 lbs Carbon Avoided



3,155 Therms Heat Prevention

Now we know there are **5,664 Kailua city trees.**

Urban Tree Inventory

Creating Hawaii's first urban tree inventory for management, research, & more

Sense of Community

Allowing like-minded individuals to form a community, all working towards a common goal.

Sense of place

Allowing citizens to gain a sense of place in their community. People become familiar with their environment.

Growing Trees

Allowing for new programs that will start planting and maintaining more trees in our communities.

Growing Awareness

Creating advocates that speak on behalf of our trees and beyond. The larger community is becoming aware of the importance of our urban forests.

Increasing Knowledge

Volunteers are being formally trained and certified as citizen foresters. Community members are seeking opportunities to gain environmental knowledge.

Increasing Stewardship

This program, focused on urban trees, is a gateway to holistic environmental stewardship and careers.



**TREES PROVIDE
WILDLIFE HABITAT.**



TREES CREATE JOBS.



**TREES
INCREASE
BUSINESS
TRAFFIC
& INCOME**



**TREES
REDUCE
SOIL
EROSION.**

**TREES MAKE
PLACES MORE
WALKABLE.**



**TREES REDUCE
URBAN HEAT.**

**TREES CREATE
SHADE & LESSEN
COOLING COSTS.**



**TREES PROVIDE
FLOOD CONTROL.**

TREES HELP REDUCE CRIME.

**TREES
FRESHEN
THE AIR.**

**TREES INCREASE
PROPERTY VALUES.**



**TREES OFFER
PROTECTION
FROM RAIN.**

**TREES
PROVIDE
CLEANER
WATER.**



TREES HELP SLOW TRAFFIC.

**TREES HELP
REDUCE TAILPIPE
EMISSIONS.**



**TREES
HELP
US FEEL
STRONGER
& LIVE
LONGER.**



TREES PROVIDE WIND BREAKS.

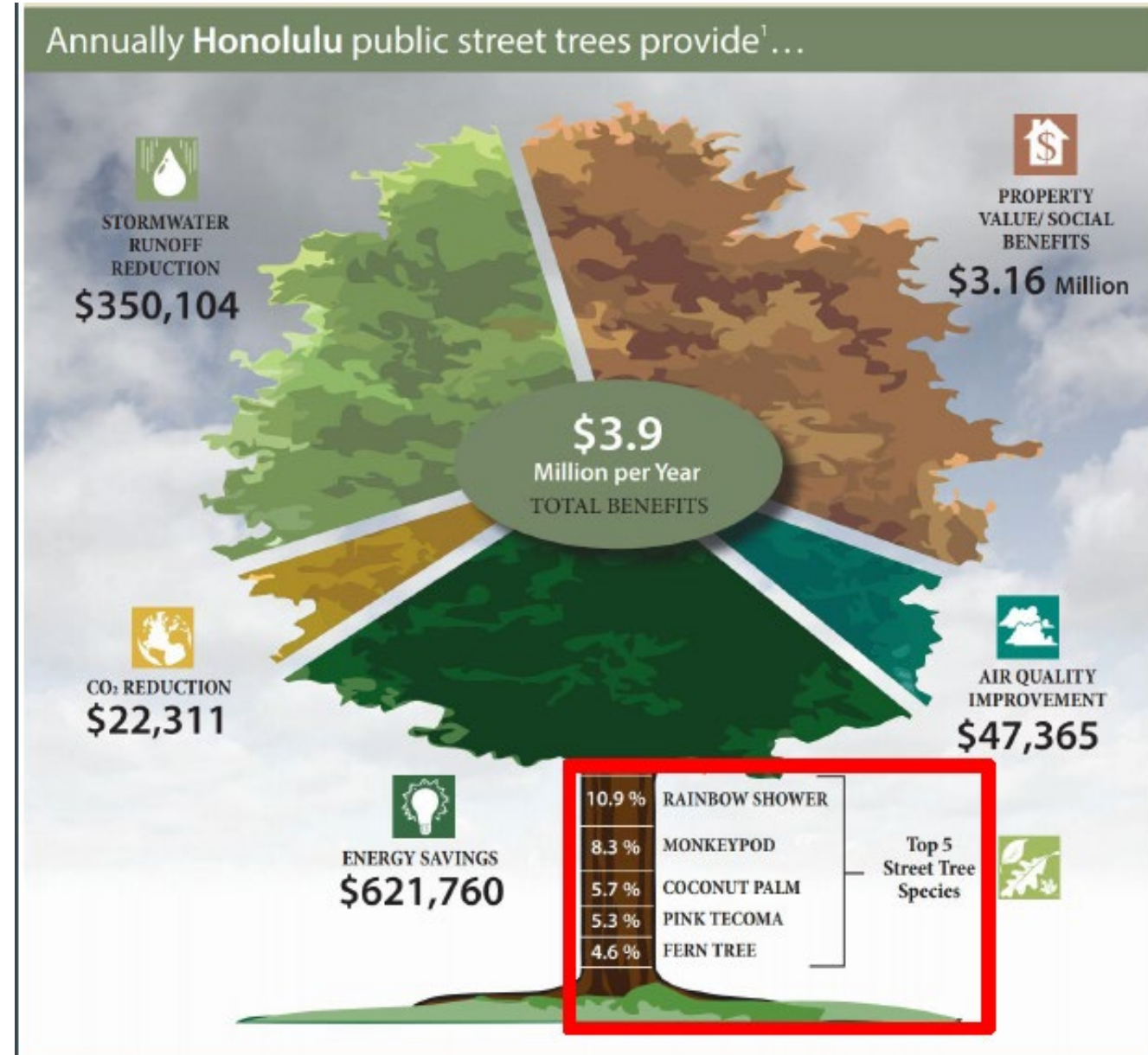
TREES PROVIDE PRIVACY.



Trees are Infrastructure

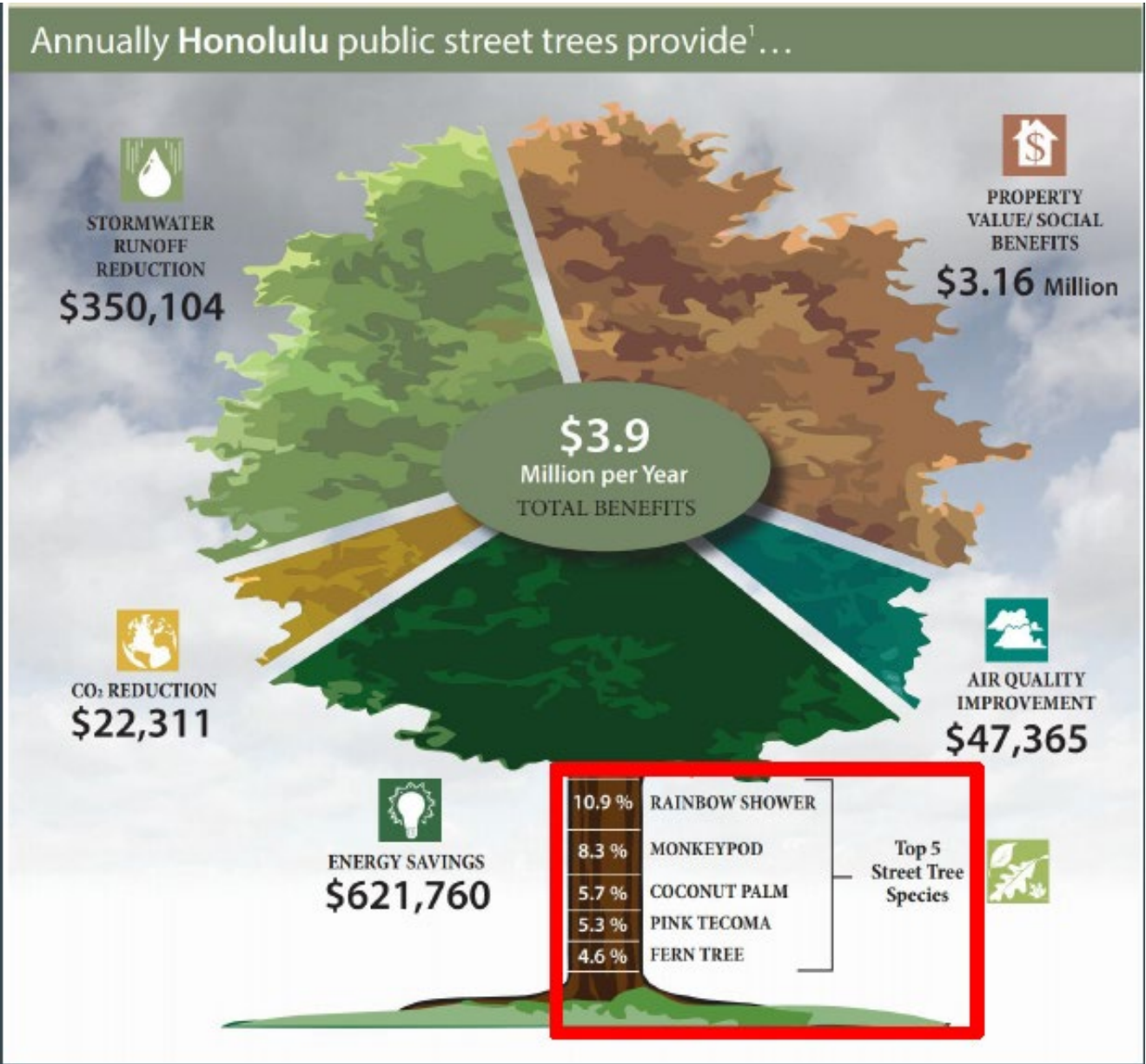
\$1 paid to maintain trees

\$3 return on investment



Policy Recommendation

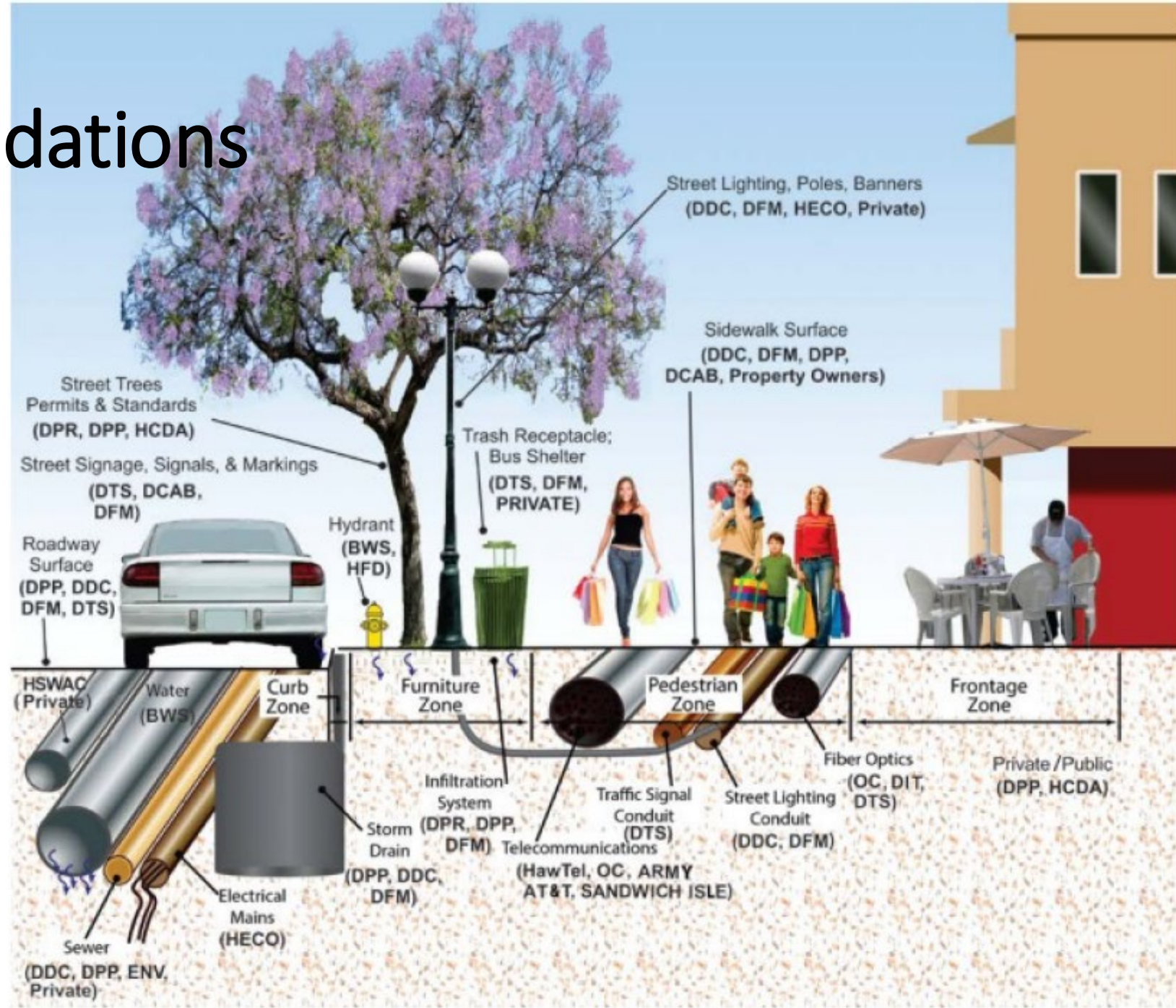
Recognize Trees as Infrastructure



Policy Recommendations

- Consolidated tree ordinance
- Enforce existing ordinances
- Update specs for tree planting

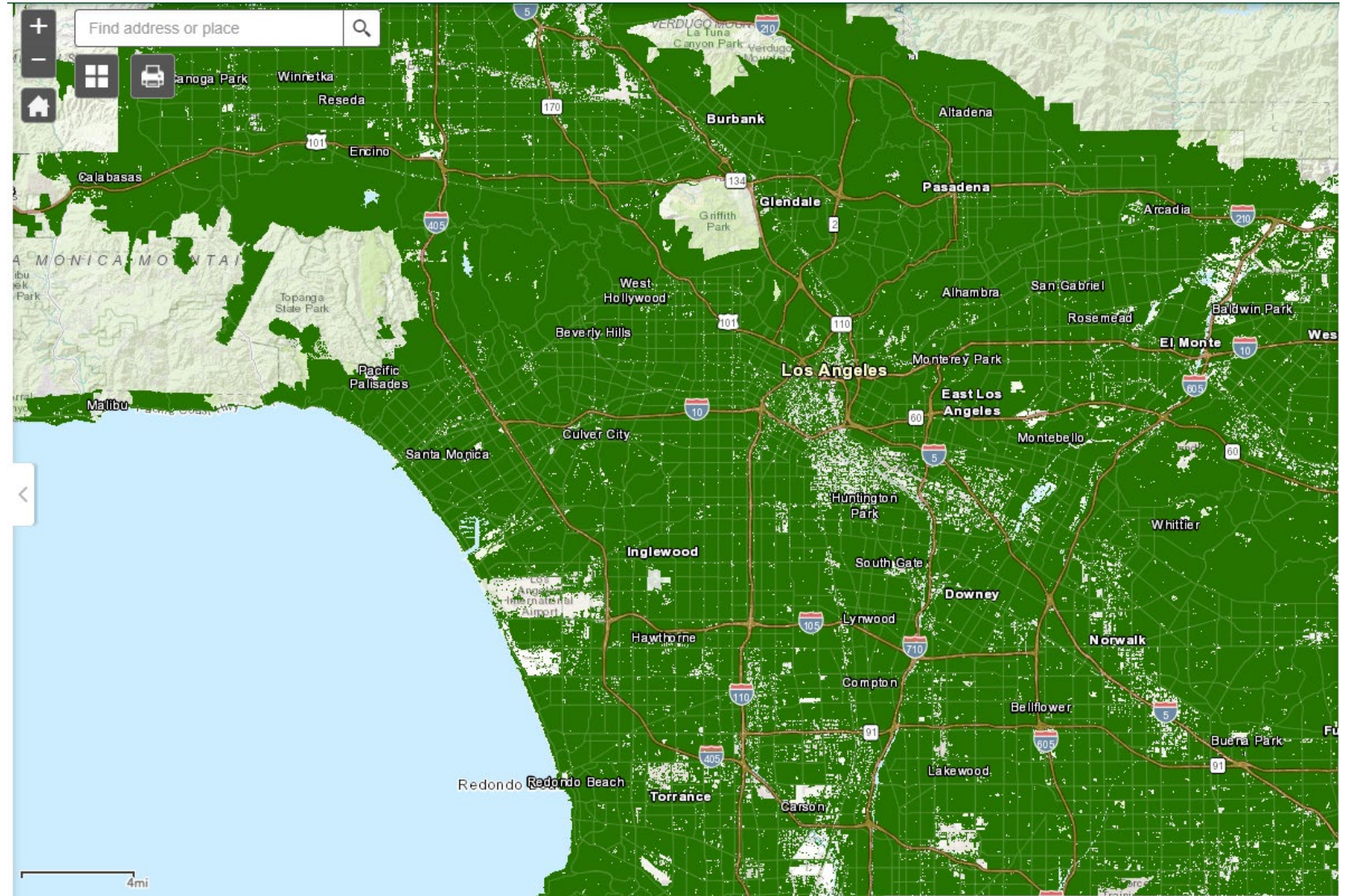
For More Info See:
<https://dlnr.hawaii.gov/forestry/lap/kaulunani/resources/>



Credit: Michele Weisbart (Michele Designs) with edits by John Whalen (PlanPacific) and Lulu Feng (SSFM International)

Tree Canopy Viewer

California Urban
Tree Canopy cover

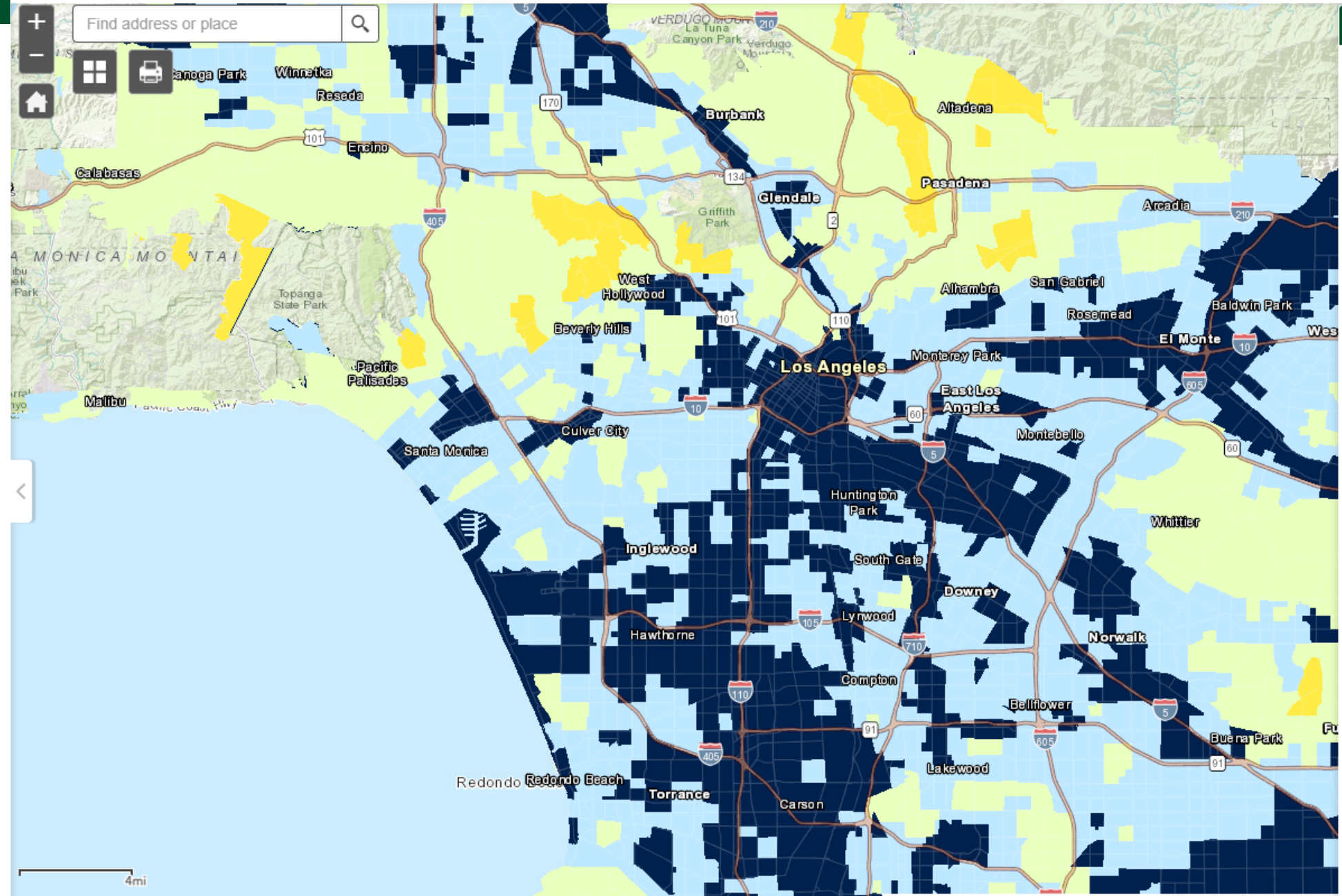
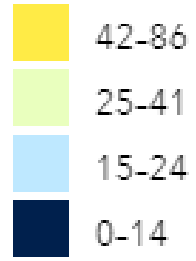


See: <https://www.fs.usda.gov/detailfull/r5/communityforests/?cid=fseprd647442&width=full>

Legend

Percent canopy cover 2018

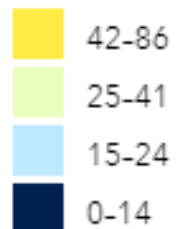
Percent canopy cover



Legend

Percent canopy cover 2018

Percent canopy cover



Layers

☐ Urban area boundaries

☒ CA census tracts



☒ Neighborhoods and roads

☒ Percent canopy cover 2018

☐ Urban canopy 2018

☐ Population size 2010

☒ Poverty incidence



Percentile of poverty incidence among census tracts

☐ Asthma incidence



Percentile of asthma incidence among census tracts

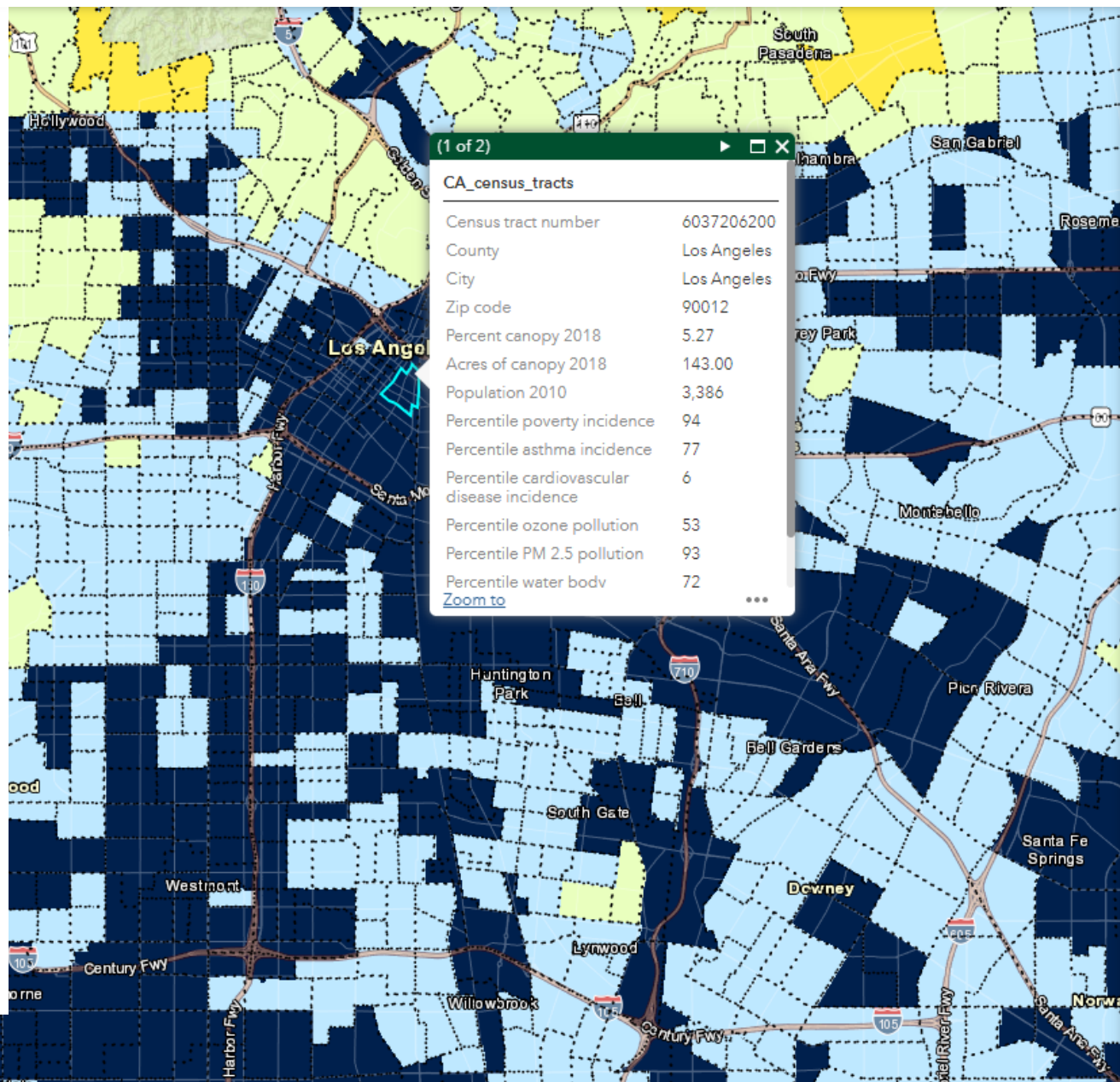
☒ Cardiovascular disease incidence

☐ Ozone pollution

☐ PM 2.5 pollution

☐ Water body impairment

☐ Urban Heat Island Index



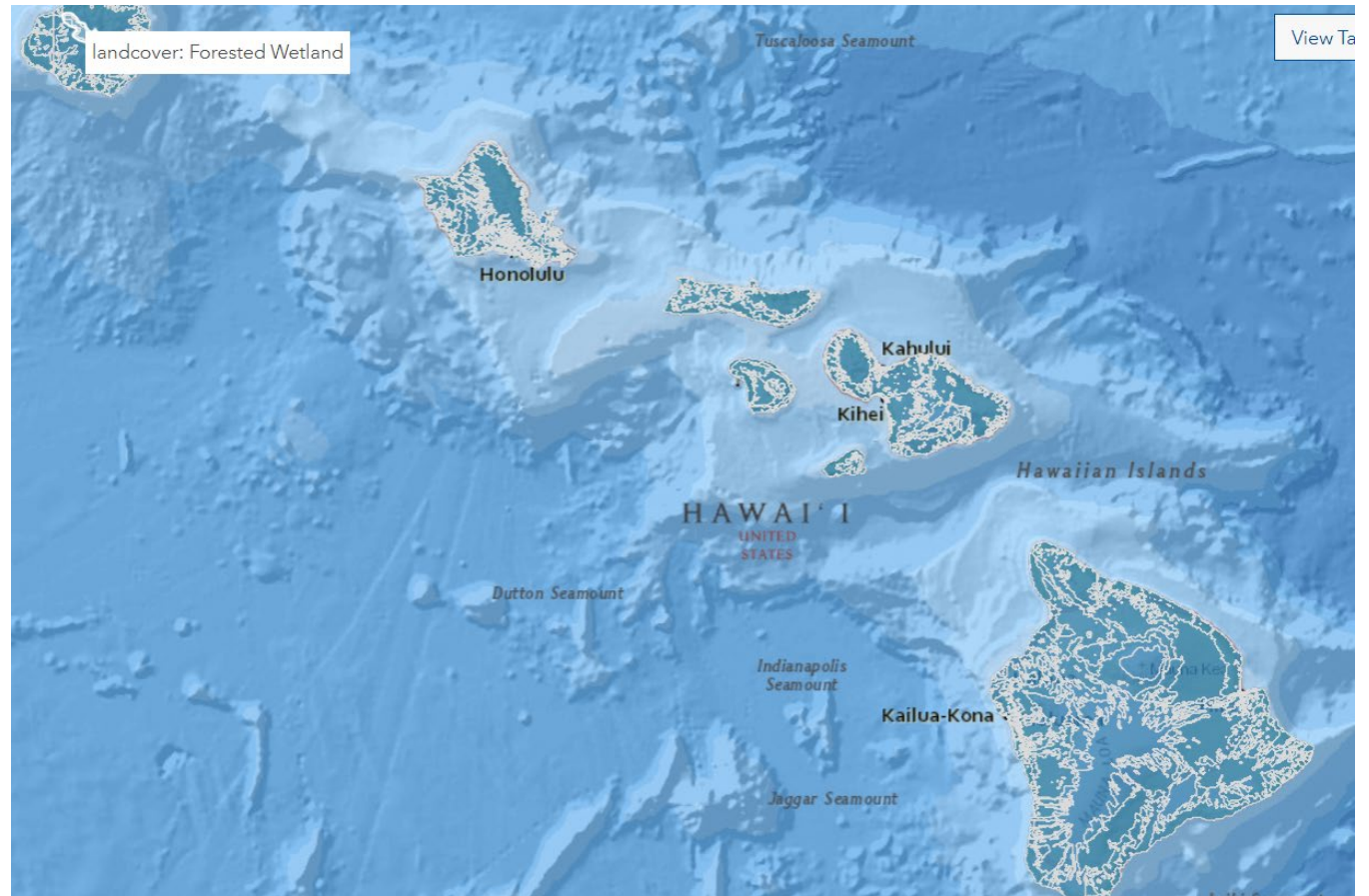
Hawai'i Tree Canopy Viewer – Coming 2022!

- Canopy cover
- Impervious surfaces
- Sociodemographic data
- Environmental justice indicators

THEN we can assess:

Ecosystem Services

Carbon Sequestration,
etc



Mahalo

Kaulunani Advisory Council
David Smith, DOFAW
Miranda Hutten, US Forest Service
Kate Wiechmann, Kaulunani
Shannon Rivera, Smart Trees Pacific
Irene Sprecher, Forest Solutions
Dan Dinell, Trees for Honolulu's Future



Heather McMillen
heather.l.mcmillen@hawaii.gov

/
...opo

E,ULU,Ê!

www.kaulunani.org

@kaulunani

