



Department of the Navy Public-Private Ventures (PPV) Program Overview

**Sandra Tanoue
Director, Public Private Ventures
6 June 2017**

DoN Housing Public - Private Ventures



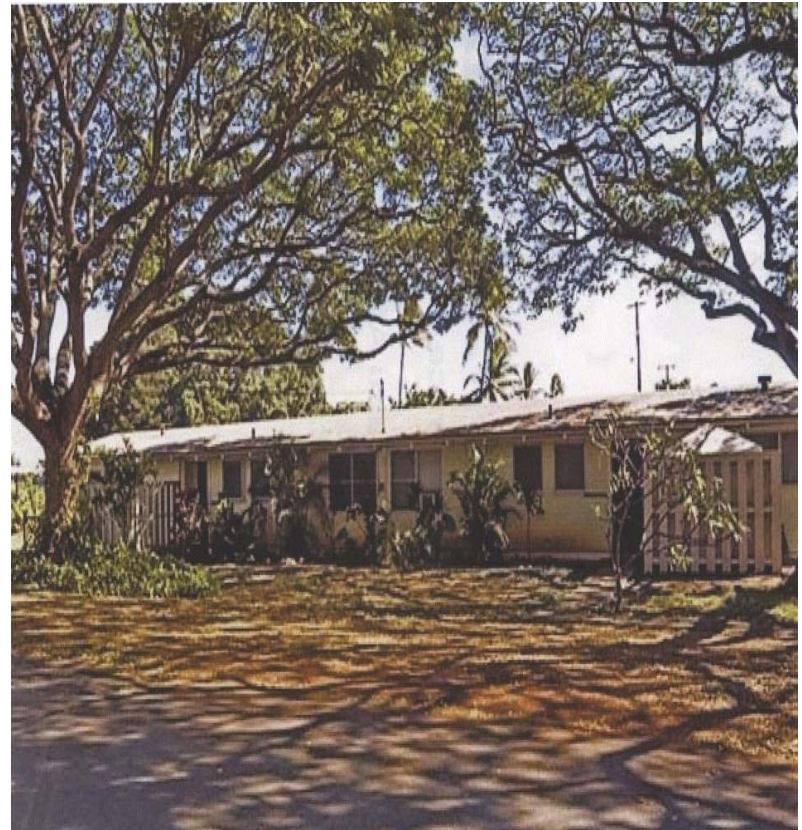
Halsey Terrace

- Where We Were
- Navy PPV Objectives
- Navy Business Approach
- Business Model
- Economics
- Development
- Portfolio Management

Where We Were



- Housing - Old, not adequately maintained, needed extensive renovating or replacement.
- Cost over \$2B and 30 to 40 years
- Needed - Innovation or Transformation



Halsey Terrace, Pearl Harbor, HI

Navy Housing PPV Objectives



- Safe, high-quality and affordable
- Leverage Navy dollars
- Maximize Operations & Maintenance cost avoidance
- Protect value of Navy assets
- Minimize Navy's liability
- Participate in key business decisions
- Maintain flexibility

Navy Business Approach



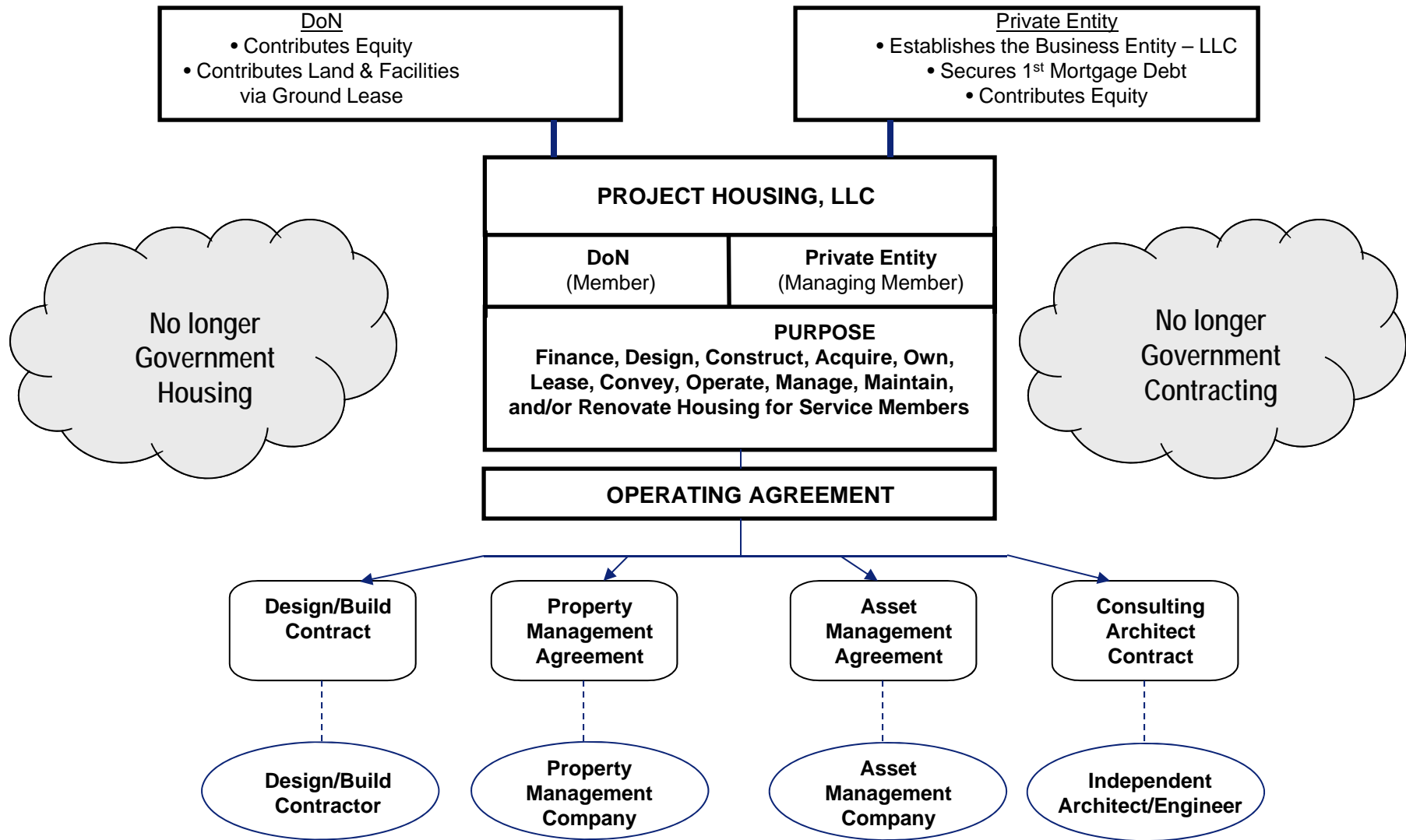
- Partnership
- Investments
- No guarantees



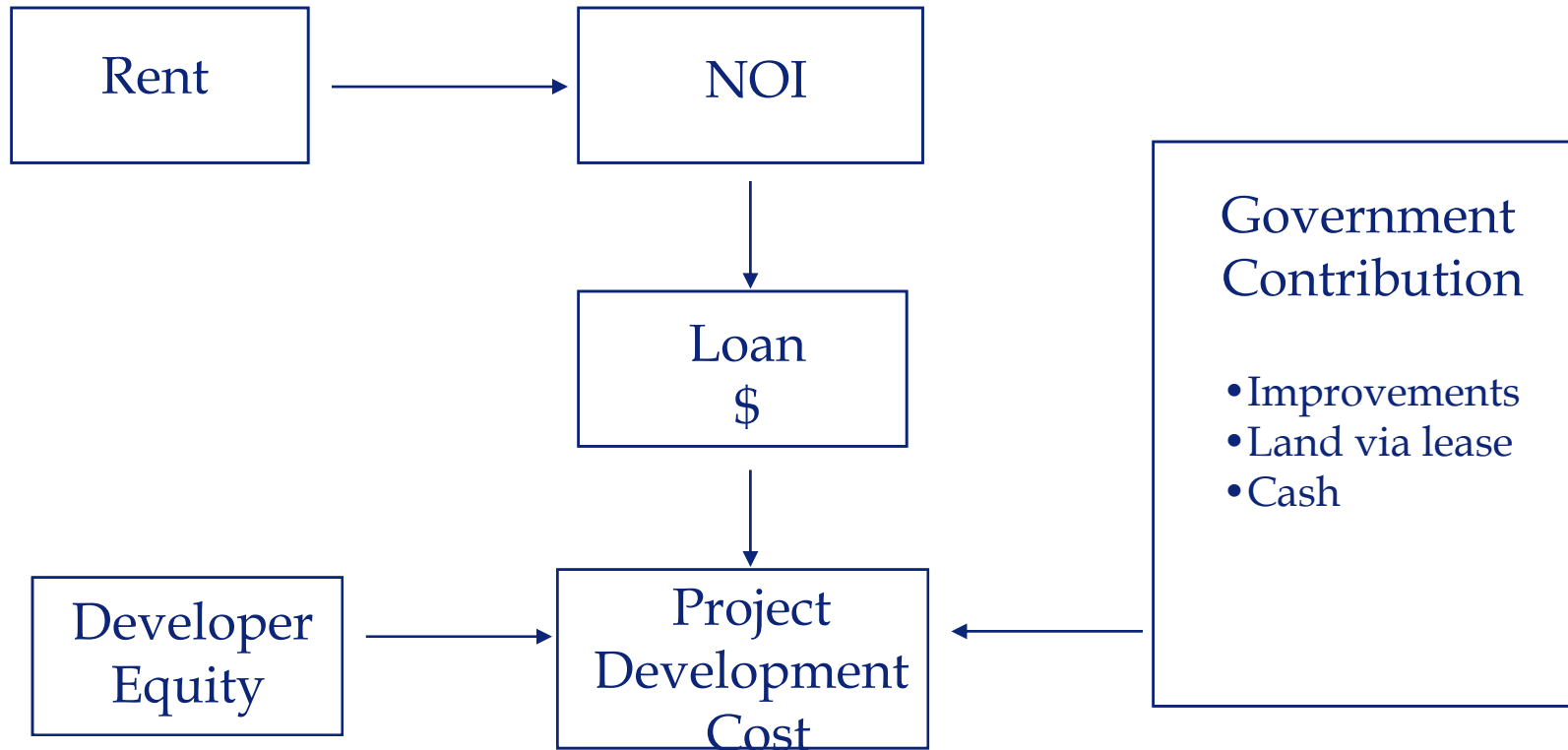
Moanalua Terrace, Pearl Harbor, HI

- Out lease of land to LLC and conveyance of existing property and facilities
- Revitalize existing inventory and address housing deficit

Typical Business Model



Economic Anatomy of a PPV



Development



Renovation
22% of Portfolio



Minor or No Work
43% of Portfolio

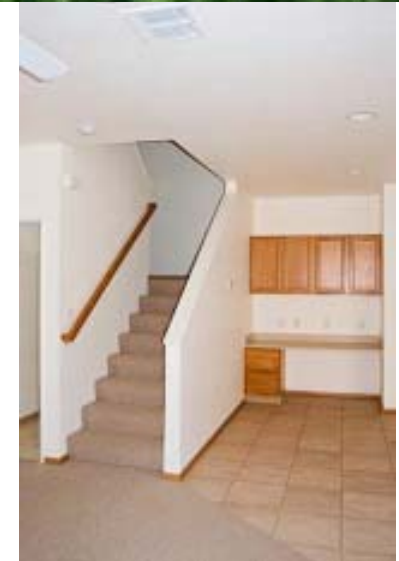


Replacement/New
Construction
35% of Portfolio



Images: Luke Filed, Hale Moku and McGrew

Radford Terrace, Pearl Harbor, HI





Neighborhood Amenities



Maintaining Historic Integrity



Hospital Point



Makalapa



Hale Alii



Marine Barracks

Photovoltaic

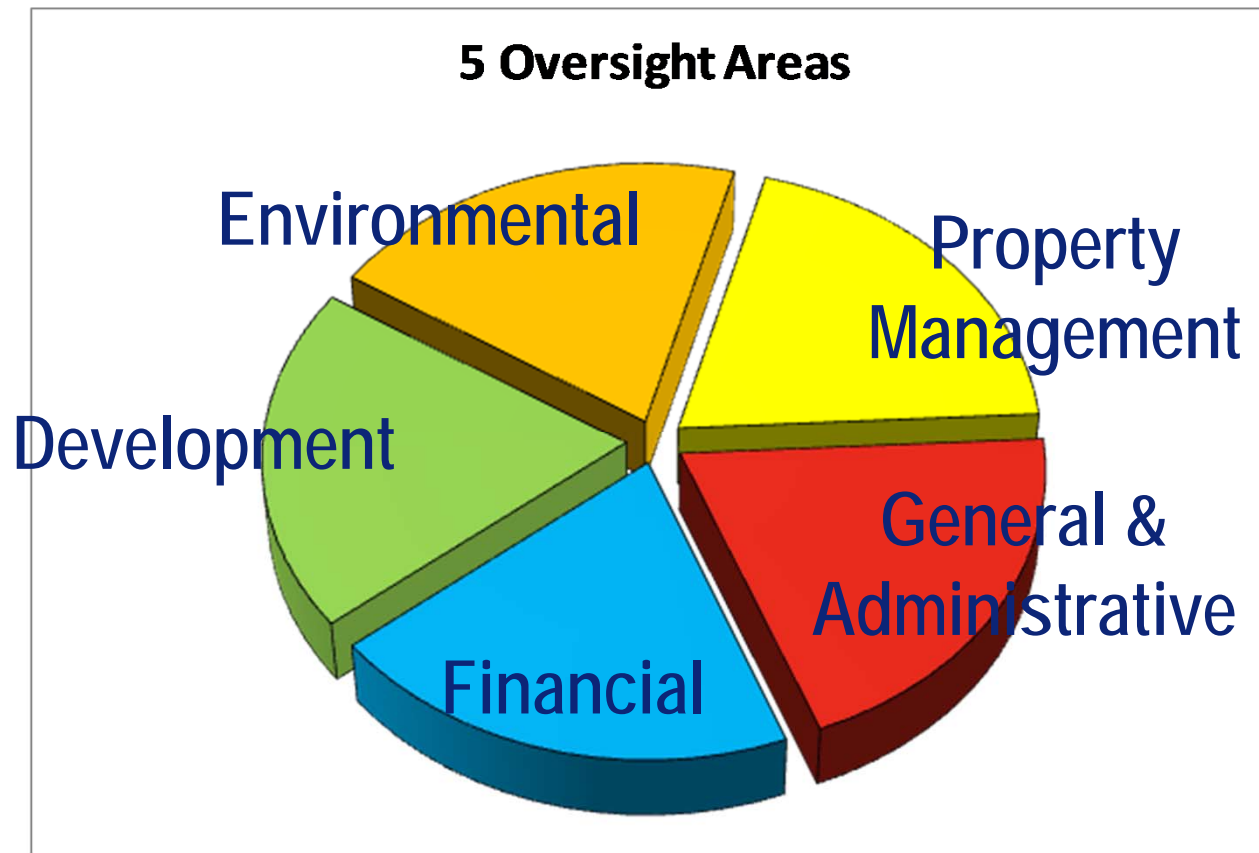


Halsey Terrace Rooftop



Pearl City Peninsula

Portfolio Monitoring



Questions, Answers and Reference Materials



*Visit the Department of Defense's Military Housing Privatization
Homepage at <http://www.acq.osd.mil/housing>
for information on housing projects, references and reporting, and
miscellaneous information.*

Questions?

